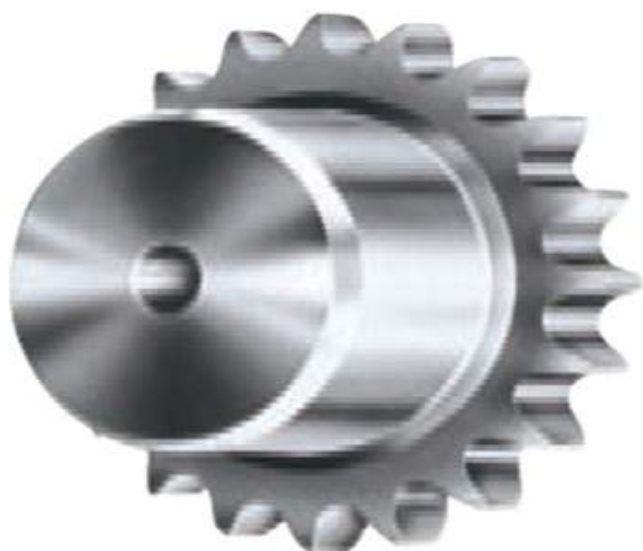




CÔNG TY CỔ PHẦN TRƯỜNG PHƯƠNG VIỆT NAM



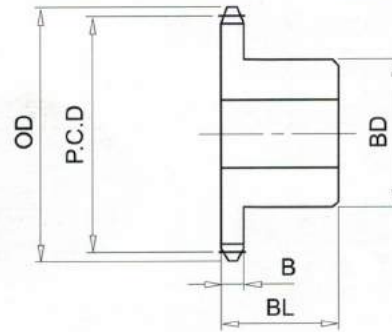
<https://www.banhrangcongnghiep.com>

MỤC LỤC:

1. Bánh răng xích trang 1 - 29
 2. Bánh răng trục trang 30 - 41
 3. Bánh răng côn thẳng trang 42 - 51
 4. Bộ bánh vít, trục vít trang 52
- * Ngoài những sản phẩm kể trên, công ty chúng tôi còn nhận đơn đặt hàng các loại sản phẩm khác.
 - * Ngoài các sản phẩm đã kể trên, công ty chúng tôi còn sản xuất các loại khớp nối (khớp nối xích, khớp nối vạn năng, khớp nối dạng đĩa, khớp nối đệm bọc then, khóa lực ma sát không chốt cài, hộp giảm tốc, bánh vít trục vít).

RS25# (1/4" PICH) DIMENSIONS

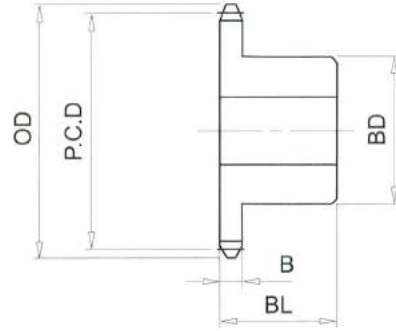
Bánh Răng Xích (gù)
 Chất Liệu S35C
 B Type Sprocket
 Material S35C



No. of Teeth	Outside Diam. OD	Pitch Diam. P.C.D	Bottom or Capliper Diam.	BD	BL	B
32	68	64.78	61.48	40	20	2.8
33	70	66.80	63.43	40	20	2.8
34	72	68.82	65.52	40	20	2.8
35	74	70.84	67.47	40	20	2.8
36	76	72.86	69.56	40	20	2.8
37	78	74.88	71.51	40	20	2.8
38	80	76.90	73.60	40	20	2.8
39	82	78.91	75.55	40	20	2.8
40	84	80.93	77.63	40	20	2.8
41	87	82.95	79.59	50	20	2.8
42	89	84.97	81.67	50	20	2.8
43	91	86.99	83.63	50	20	2.8
44	93	89.01	85.71	50	20	2.8
45	95	91.03	87.68	50	20	2.8
46	97	93.05	89.75	50	20	2.8
47	99	95.07	91.72	50	20	2.8
48	101	97.09	93.79	50	20	2.8
49	103	99.11	95.76	50	20	2.8
50	105	101.13	97.83	50	20	2.8
51	107	103.15	99.80	50	20	2.8
52	109	105.17	101.87	50	20	2.8
53	111	107.19	103.84	50	20	2.8
54	113	109.21	105.91	50	20	2.8
55	115	111.23	107.88	50	20	2.8

RS25# (1/4" PICH) DIMENSIONS

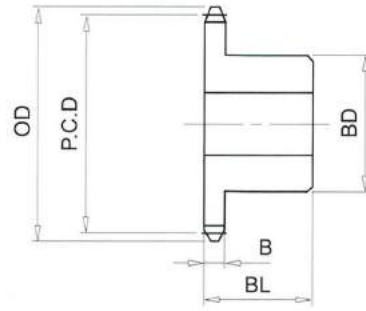
Bánh Răng Xích (gù)
 Chất Liệu S35C
 B Type Sprocket
 Material S35C



No. of Teeth	Outside Diam. OD	Pitch Diam. P.C.D	Bottom or Capliper Diam.	BD	BL	B
56	117	113.25	109.95	50	20	2.8
57	119	115.27	111.93	50	20	2.8
58	121	117.29	113.99	50	20	2.8
59	123	119.31	115.97	50	20	2.8
60	125	121.33	118.03	50	20	2.8
61	127	123.35	120.01	50	30	2.8
62	129	125.37	122.07	50	30	2.8
63	131	127.39	124.05	50	30	2.8
64	133	129.41	126.11	50	30	2.8
65	135	131.43	128.10	50	30	2.8
66	137	133.45	130.15	50	30	2.8
67	139	135.47	132.14	50	30	2.8
68	141	137.50	134.20	50	30	2.8
69	143	139.52	136.18	50	30	2.8
70	145	141.54	138.24	50	30	2.8
71	147	143.56	140.22	50	30	2.8
72	149	145.58	142.28	50	30	2.8
73	151	147.60	144.26	50	30	2.8
74	153	149.62	146.32	50	30	2.8
75	155	151.64	148.31	50	30	2.8
76	157	153.66	150.36	50	30	2.8
77	159	155.68	152.35	50	30	2.8
78	161	157.70	154.40	50	30	2.8
79	163	159.72	156.39	50	30	2.8

RS25# (1/4" PICH) DIMENSIONS

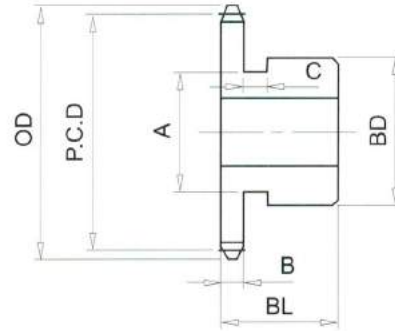
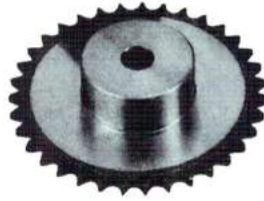
Bánh Răng Xích (gù)
 Chất Liệu S35C
 B Type Sprocket
 Material S35C



No. of Teeth	Outside Diam. OD	Pitch Diam. P.C.D	Bottom or Capliper Diam.	BD	BL	B
80	165	161.74	158.44	50	30	2.8
81	167	163.76	160.43	50	30	2.8
82	169	165.78	162.48	50	30	2.8
83	171	167.81	164.48	50	30	2.8
84	174	169.83	166.53	50	30	2.8
85	176	171.85	168.52	50	30	2.8
86	178	173.87	170.57	50	30	2.8
87	180	175.89	172.56	50	30	2.8
88	182	177.91	174.61	50	30	2.8
89	184	179.93	176.60	50	30	2.8
90	186	181.95	178.65	50	30	2.8
91	188	183.97	180.64	50	30	2.8
92	190	185.99	182.69	50	30	2.8
93	192	188.01	184.69	50	30	2.8
94	194	190.03	186.73	50	30	2.8
95	196	192.06	188.73	50	30	2.8
96	198	194.08	190.78	50	30	2.8
97	200	196.10	192.77	50	30	2.8
98	202	198.12	194.82	50	30	2.8
99	204	200.14	196.81	50	30	2.8
100	206	202.16	198.86	50	30	2.8

RS35# (3/8" PICH) DIMENSIONS

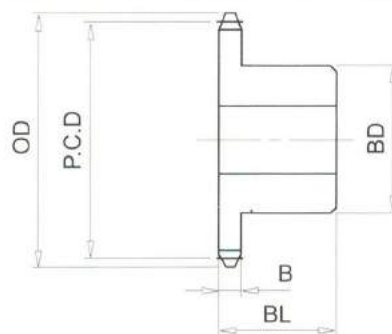
Bánh Răng Xích (gù)
 Chất Liệu S35C
 B Type Sprocket
 Material S35C



No. of Teeth	Outside Diam. OD	Pitch Diam. P.C.D	Bottom or Capliper Diam.	A	BD	BL	B	C
8	28	24.89	19.81	14	18	20	4.2	4
9	32	27.85	22.35	17	21	20	4.2	4
10	35	30.82	25.74	20	24	20	4.2	4
11	38	33.81	28.38	22	26	20	4.2	4
12	41	36.80	31.72	27	31	20	4.2	4
13	44	39.80	34.43	29	32	20	4.2	4
14	47	42.80	37.72	32	20	4.2		
15	51	45.81	40.48	35	20	4.2		
16	54	48.82	43.74	37	20	4.2		
17	57	51.84	46.54	41	20	4.2		
18	60	54.85	49.77	44	20	4.2		
19	63	57.87	52.59	47	20	4.2		
20	66	60.89	55.81	50	20	4.2		
21	69	63.91	58.65	53	20	4.2		
22	72	66.93	61.85	56	20	4.2		
23	75	69.95	64.71	60	20	4.2		
24	78	72.97	67.89	53	22	4.2		
25	81	76.00	70.77	53	22	4.2		
26	84	79.02	73.94	53	22	4.2		
27	87	82.05	76.83	53	22	4.2		
28	90	85.07	79.99	53	22	4.2		
29	93	88.10	82.89	53	22	4.2		
30	96	91.12	86.04	53	22	4.2		
31	99	94.15	88.95	53	22	4.2		

RS35# (3/8" PICH) DIMENSIONS

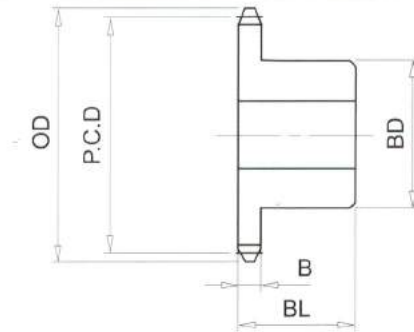
Bánh Răng Xích (gù)
 Chất Liệu S35C
 B Type Sprocket
 Material S35C



No. of Teeth	Outside Diam. OD	Pitch Diam. P.C.D	Bottom or Capliper Diam.	BD	BL	B
32	102	97.18	92.10	53	22	4.2
33	105	100.20	95.01	53	22	4.2
34	109	103.23	98.15	53	22	4.2
35	112	106.26	101.07	53	22	4.2
36	115	109.29	104.21	53	22	4.2
37	118	112.32	107.13	63	25	4.2
38	121	115.34	110.26	63	25	4.2
39	124	118.37	113.20	63	25	4.2
40	127	121.40	116.32	63	25	4.2
41	130	124.43	119.26	63	25	4.2
42	133	127.46	122.38	63	25	4.2
43	136	130.49	125.32	63	25	4.2
44	139	133.52	128.44	63	25	4.2
45	142	136.55	131.38	63	25	4.2
46	145	139.58	134.50	63	25	4.2
47	148	142.61	137.45	63	25	4.2
48	151	145.64	140.56	63	25	4.2
49	154	148.67	143.51	63	25	4.2
50	157	151.69	146.61	63	25	4.2
51	160	154.72	149.57	63	25	4.2
52	163	157.75	152.67	63	25	4.2
53	166	160.78	155.63	63	25	4.2
54	169	163.82	158.74	63	25	4.2
55	172	166.85	161.70	63	25	4.2

RS35# (3/8" PICH) DIMENSIONS

Bánh Răng Xích (gù)
 Chất Liệu S35C
 B Type Sprocket
 Material S35C

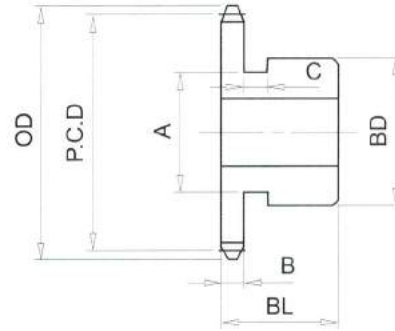


No. of Teeth	Outside Diam. OD	Pitch Diam. P.C.D	Bottom or Capliper Diam.	BD	BL	B
56	175	169.88	164.80	63	25	4.2
57	178	172.91	167.76	63	25	4.2
58	181	175.94	170.86	63	25	4.2
59	184	178.97	173.82	63	25	4.2
60	187	182.00	176.92	63	25	4.2
61	190	185.03	179.89	63	25	4.2
62	194	188.06	182.98	63	25	4.2
63	197	191.09	185.95	63	25	4.2
64	200	194.12	189.04	63	25	4.2
65	203	197.15	192.01	68	25	4.2
66	206	200.18	195.10	68	25	4.2
67	209	203.21	198.08	68	25	4.2
68	212	206.24	201.16	68	25	4.2
69	215	209.27	204.14	68	25	4.2
70	218	212.30	207.22	68	25	4.2
71	221	215.34	210.20	68	25	4.2
72	224	218.37	213.29	68	25	4.2
73	227	221.40	216.27	68	25	4.2
74	230	224.43	219.35	68	25	4.2
75	233	227.46	222.33	68	25	4.2
76	236	230.49	225.41	68	25	4.2
77	239	233.52	228.39	68	25	4.2
78	242	236.55	231.47	68	25	4.2
79	245	239.58	234.46	68	25	4.2
80	248	242.61	237.53	68	25	4.2

RS40# (1/2" PICH) DIMENSIONS

Bánh Răng Xích (gù)
 Chất Liệu S35C
 B Type Sprocket
 Material S35C

B型鏈齒輪
 材質 **S35C**

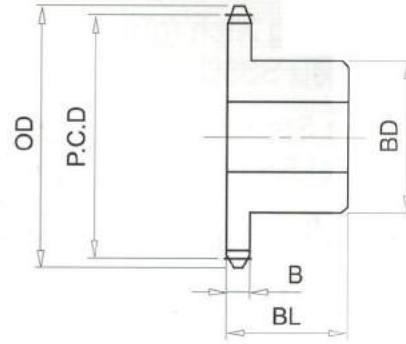


No. of Teeth	Outside Diam. OD	Pitch Diam. P.C.D	Bottom or Capliper Diam.	A	BD	BL	B	C
8	38	33.19	25.24	20	24	22	7.2	5
9	42	37.13	28.62	24	28	22	7.2	5
10	46	41.10	33.15	27	32	22	7.2	5
11	51	45.08	36.67	30	35	22	7.2	5
12	55	49.07	41.12	36	40	22	7.2	5
13	59	53.07	44.73	37		22	7.2	
14	63	57.07	49.12	42		22	7.2	
15	67	61.08	52.80	46		22	7.2	
16	71	65.10	57.15	50		22	7.2	
17	76	69.12	60.87	54		22	7.2	
18	80	73.14	65.19	57		22	7.2	
19	84	77.16	68.95	62		22	7.2	
20	88	81.18	73.23	67		25	7.2	
21	92	85.21	77.02	71		25	7.2	
22	96	89.24	81.29	75		25	7.2	
23	100	93.27	85.10	77		25	7.2	
24	104	97.30	89.35	63		25	7.2	
25	108	101.33	93.18	63		25	7.2	
26	112	105.36	97.41	63		25	7.2	
27	116	109.40	101.26	63		25	7.2	
28	120	113.43	105.48	63		25	7.2	
29	124	117.46	109.34	63		25	7.2	
30	128	121.50	113.55	63		25	7.2	
31	133	125.53	117.42	68		28	7.2	

RS40# (1/2" PICH) DIMENSIONS

Bánh Răng Xích (gù)
Chất Liệu S35C

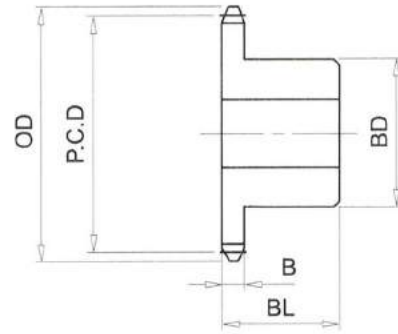
B Type Sprocket
Material S35C



No. of Teeth	Outside Diam. OD	Pitch Diam. P.C.D	Bottom or Capliper Diam.	BD	BL	B
32	137	129.57	121.62	68	28	7.2
33	141	133.61	125.50	68	28	7.2
34	145	137.64	129.69	68	28	7.2
35	149	141.68	133.59	68	28	7.2
36	153	145.72	137.77	68	28	7.2
37	157	149.75	141.67	68	28	7.2
38	161	153.79	145.84	68	28	7.2
39	165	157.83	149.75	68	28	7.2
40	169	161.87	153.92	68	28	7.2
41	173	165.91	157.83	73	32	7.2
42	177	169.94	161.99	73	32	7.2
43	181	173.98	165.92	73	32	7.2
44	185	178.02	170.07	73	32	7.2
45	189	182.06	174.00	73	32	7.2
46	193	186.10	178.15	73	32	7.2
47	197	190.14	182.08	73	32	7.2
48	201	194.18	186.23	73	32	7.2
49	205	198.22	190.17	73	32	7.2
50	209	202.26	194.31	73	32	7.2
51	214	206.30	198.25	73	32	7.2
52	218	210.34	202.39	73	32	7.2
53	222	214.38	206.34	73	32	7.2
54	226	218.42	210.47	73	32	7.2
55	230	222.46	214.42	73	32	7.2

Rs40# (1/2" PICH) DIMENSIONS

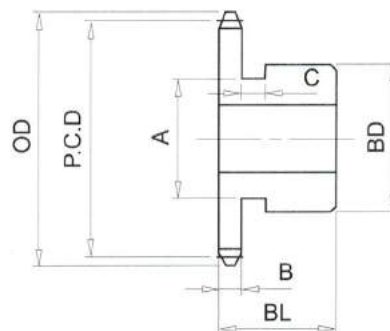
Bánh Răng Xích (gù)
 Chất Liệu S35C
 B Type Sprocket
 Material S35C



No. of Teeth	Outside Diam. OD	Pitch Diam. P.C.D	Bottom or Capliper Diam.	BD	BL	B
56	234	226.50	218.55	73	32	7.2
57	238	230.54	222.50	73	32	7.2
58	242	234.58	226.63	73	32	7.2
59	246	238.62	230.59	73	32	7.2
60	250	242.66	234.71	73	32	7.2
61	254	246.70	238.67	73	32	7.2
62	258	250.74	242.79	73	32	7.2
63	262	254.78	246.76	73	32	7.2
64	266	258.83	250.88	73	32	7.2
65	270	262.87	254.84	83	32	7.2
66	274	266.91	258.96	83	32	7.2
67	278	270.95	262.92	83	32	7.2
68	282	274.99	267.04	83	32	7.2
69	286	279.03	271.01	83	32	7.2
70	290	283.07	275.12	83	32	7.2
71	294	287.11	279.09	83	32	7.2
72	298	291.15	283.20	83	32	7.2
73	303	295.20	287.18	83	32	7.2
74	307	299.24	291.29	83	32	7.2
75	311	303.28	295.26	83	32	7.2
76	315	307.32	299.37	83	32	7.2
77	319	311.36	303.35	83	32	7.2
78	323	315.40	307.45	83	32	7.2
79	327	319.44	311.43	83	32	7.2
80	331	323.49	315.54	88	35	7.2

RS50# (5/8" PICH) DIMENSIONS

Bánh Răng Xích (gù)
 Chất Liệu S35C
 B Type Sprocket
 Material S35C



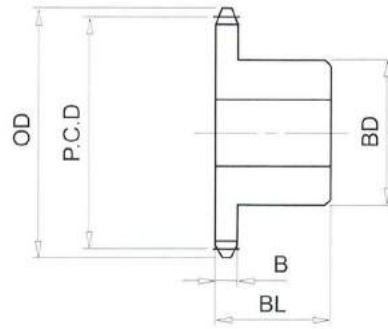
No. of Teeth	Outside Diam. OD	Pitch Diam. P.C.D	Bottom or Capliper Diam.	A	BD	BL	B	C
8	48	41.48	31.32	25	30	25	8.7	6
9	53	46.42	35.55	30	34	25	8.7	6
10	58	51.37	41.21	34	40	25	8.7	6
11	64	56.35	45.61	40	45	25	8.7	6
12	69	61.34	51.18	46	50	25	8.7	6
13	74	66.33	55.69	49	51	25	8.7	6
14	79	71.34	61.18	52	25	8.7		
15	84	76.35	65.78	57	25	8.7		
16	89	81.37	71.21	62	25	8.7		
17	94	86.39	75.87	67	25	8.7		
18	100	91.42	81.26	72	28	8.7		
19	105	96.45	85.96	73	28	8.7		
20	110	101.48	91.32	73	28	8.7		
21	115	106.51	96.06	73	28	8.7		
22	120	111.55	101.39	73	28	8.7		
23	125	116.59	106.15	73	28	8.7		
24	130	121.62	111.46	73	28	8.7		
25	135	126.66	116.25	73	28	8.7		
26	140	131.70	121.54	73	28	8.7		
27	145	136.74	126.35	73	28	8.7		
28	150	141.79	131.63	73	28	8.7		
29	155	146.83	136.45	73	28	8.7		
30	161	151.87	141.71	73	28	8.7		
31	166	156.92	146.56	73	28	8.7		

RS50# (5/8" PICH) DIMENSIONS

Bánh Răng Xích (gù)
 Chất Liệu S35C

B Type Sprocket
 Material S35C

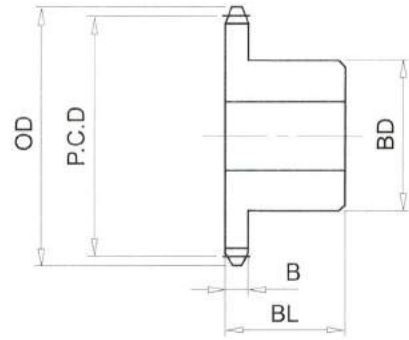
B型鏈齒輪
 材質 **S35C**



No. of Teeth	Outside Diam. OD	Pitch Diam. P.C.D	Bottom or Capliper Diam.	BD	BL	B
32	171	161.96	151.80	73	28	8.7
33	176	167.01	156.66	73	28	8.7
34	181	172.05	161.89	73	28	8.7
35	186	177.10	166.76	73	28	8.7
36	191	182.15	171.99	83	35	8.7
37	196	187.19	176.86	83	35	8.7
38	201	192.24	182.08	83	35	8.7
39	206	197.29	186.97	83	35	8.7
40	211	202.33	192.17	83	35	8.7
41	216	207.38	197.07	83	35	8.7
42	221	212.43	202.27	83	35	8.7
43	226	217.48	207.17	83	35	8.7
44	231	222.53	212.37	83	35	8.7
45	237	227.58	217.28	83	35	8.7
46	242	232.63	222.47	83	35	8.7
47	247	237.68	227.38	83	35	8.7
48	252	242.73	232.57	83	35	8.7
49	257	247.78	237.49	83	35	8.7
50	262	252.82	242.66	83	35	8.7
51	267	257.87	247.59	83	35	8.7
52	272	262.92	252.76	83	35	8.7
53	277	267.97	257.70	83	35	8.7
54	282	273.03	262.87	83	35	8.7
55	287	278.08	267.80	83	35	8.7

RS50# (5/8" PICH) DIMENSIONS

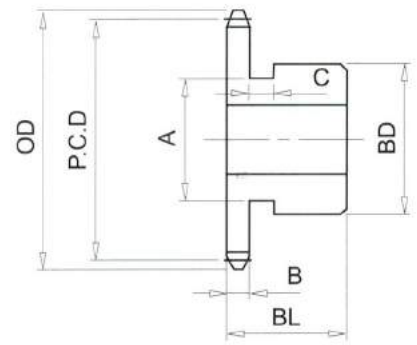
Bánh Răng Xích (gù)
 Chất Liệu S35C
 B Type Sprocket
 Material S35C



No. of Teeth	Outside Diam. OD	Pitch Diam. P.C.D	Bottom or Capliper Diam.	BD	BL	B
56	292	283.13	272.97	83	35	8.7
57	297	288.18	277.91	83	35	8.7
58	302	293.23	283.07	83	35	8.7
59	307	298.28	288.01	83	35	8.7
60	312	303.33	293.17	83	35	8.7
61	317	308.38	298.12	83	35	8.7
62	323	313.43	303.27	83	35	8.7
63	328	318.48	308.22	83	35	8.7
64	333	323.53	313.37	83	35	8.7
65	338	328.58	318.33	93	40	8.7
66	343	333.64	323.48	93	40	8.7
67	348	338.69	328.43	93	40	8.7
68	353	343.74	333.58	93	40	8.7
69	358	348.79	338.54	93	40	8.7
70	363	353.84	343.68	93	40	8.7
71	368	358.89	348.64	93	40	8.7
72	373	363.94	353.78	93	40	8.7
73	378	369.00	358.75	93	40	8.7
74	383	374.05	363.89	93	40	8.7
75	388	379.10	368.86	93	40	8.7
76	393	384.15	373.99	93	40	8.7
77	398	389.20	378.96	93	40	8.7
78	403	394.25	384.09	93	40	8.7
79	409	399.31	389.07	93	40	8.7
80	414	404.36	394.20	98	45	8.7

RS60# (3/4" PICH) DIMENSIONS

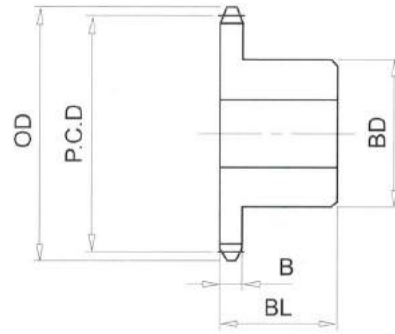
Bánh Răng Xích (gù)
 Chất Liệu S35C
 B Type Sprocket
 Material S35C



No. of Teeth	Outside Diam. OD	Pitch Diam. P.C.D	Bottom or Capliper Diam.	A	BD	BL	B	C
8	57	49.78	37.87	32	36	32	11.7	7
9	64	55.70	42.94	36	42	32	11.7	7
10	70	61.65	49.74	44	49	32	11.7	7
11	76	67.62	55.02	45	51	32	11.7	7
12	83	73.60	61.69	51		32	11.7	
13	89	79.60	67.11	57		32	11.7	
14	95	85.61	73.70	62		32	11.7	
15	101	91.63	79.21	68		32	11.7	
16	107	97.65	85.74	73		32	11.7	
17	113	103.67	91.32	73		32	11.7	
18	119	109.70	97.79	83		40	11.7	
19	126	115.74	103.43	83		40	11.7	
20	132	121.78	109.87	83		40	11.7	
21	138	127.82	115.55	83		40	11.7	
22	144	133.86	121.95	83		40	11.7	
23	150	139.90	127.67	83		40	11.7	
24	156	145.95	134.04	83		40	11.7	
25	162	151.99	139.78	83		40	11.7	
26	168	158.04	146.13	83		40	11.7	
27	174	164.09	151.91	83		40	11.7	
28	181	170.14	158.23	83		40	11.7	
29	187	176.19	164.03	83		40	11.7	
30	193	182.25	170.34	83		40	11.7	
31	199	188.30	176.15	83		40	11.7	

RS60# (3/4" PICH) DIMENSIONS

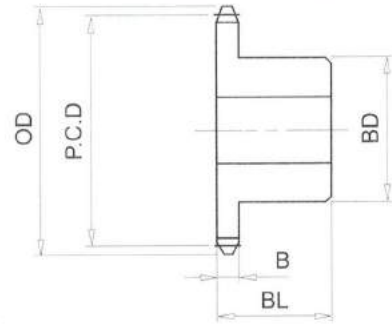
Bánh Răng Xích (gù)
 Chất Liệu S35C
 B Type Sprocket
 Material S35C



No. of Teeth	Outside Diam. OD	Pitch Diam. P.C.D	Bottom or Capliper Diam.	DH	BL	B
32	205	194.35	182.44	83	40	11.7
33	211	200.41	188.27	83	40	11.7
34	217	206.46	194.55	83	40	11.7
35	223	212.52	200.39	83	40	11.7
36	229	218.57	206.66	83	40	11.7
37	235	224.63	212.52	83	40	11.7
38	241	230.69	218.78	83	40	11.7
39	247	236.74	224.64	83	40	11.7
40	253	242.80	230.89	83	40	11.7
41	260	248.86	236.77	93	45	11.7
42	266	254.92	243.01	93	45	11.7
43	272	260.98	248.89	93	45	11.7
44	278	267.03	255.12	93	45	11.7
45	284	273.09	261.02	93	45	11.7
46	290	279.15	267.24	93	45	11.7
47	296	285.21	273.14	93	45	11.7
48	302	291.27	279.36	93	45	11.7
49	308	297.33	285.27	93	45	11.7
50	314	303.39	291.48	93	45	11.7
51	320	309.45	297.39	93	45	11.7
52	326	315.51	303.60	93	45	11.7
53	332	321.57	309.52	93	45	11.7
54	339	327.63	315.72	93	45	11.7
55	345	333.69	321.64	93	45	11.7

RS60# (3/4" PICH) DIMENSIONS

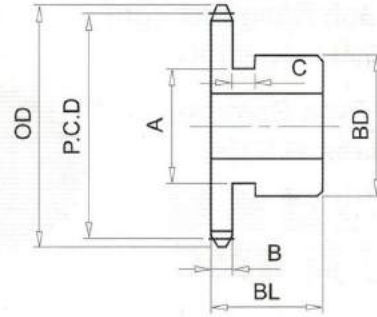
Bánh Răng Xích (gù)
 Chất Liệu S35C
 B Type Sprocket
 Material S35C



No. of Teeth	Outside Diam. OD	Pitch Diam. P.C.D	Bottom or Capliper Diam.	BD	BL	B
56	351	339.75	327.84	93	45	11.7
57	357	345.81	333.77	93	45	11.7
58	363	351.87	339.96	93	45	11.7
59	369	357.93	345.90	93	45	11.7
60	375	363.99	352.08	93	45	11.7
61	381	370.06	358.02	93	45	11.7
62	387	376.12	364.21	93	45	11.7
63	393	382.18	370.15	93	45	11.7
64	399	388.24	376.33	93	45	11.7
65	405	394.30	382.28	107	45	11.7
66	411	400.36	388.45	107	45	11.7
67	417	406.42	394.40	107	45	11.7
68	423	412.49	400.58	107	45	11.7
69	430	418.55	406.53	107	45	11.7
70	436	424.61	412.70	107	45	11.7
71	442	430.67	418.66	107	45	11.7
72	448	436.73	424.82	107	45	11.7
73	454	442.79	430.78	107	45	11.7
74	460	448.86	436.95	107	45	11.7
75	466	454.92	442.91	107	45	11.7
76	472	460.98	449.07	117	50	11.7
77	478	467.04	455.04	117	50	11.7
78	484	473.10	461.19	117	50	11.7
79	490	479.17	467.16	117	50	11.7

RS80# (1" PICH) DIMENSIONS

Bánh Răng Xích (gù)
 Chất Liệu S35C
 B Type Sprocket
 Material S35C

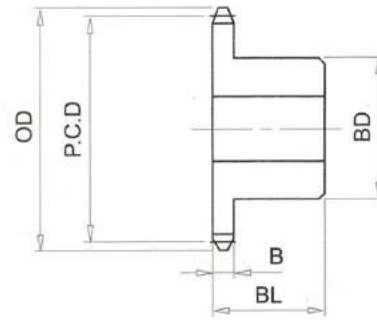


No. of Teeth	Outside Diam. OD	Pitch Diam. P.C.D	Bottom or Capliper Diam.	A	BD	BL	B	C
8	76	66.37	50.49	40	50	40	14.6	8
9	85	74.26	57.26	50	56	40	14.6	8
10	93	82.20	66.32	55	61	40	14.6	8
11	102	90.16	73.36	60		40	14.6	
12	110	98.14	82.26	67		40	14.6	
13	118	106.14	89.48	77		40	14.6	
14	127	114.15	98.27	77		40	14.6	
15	135	122.17	105.62	93		40	14.6	
16	143	130.20	114.32	93		40	14.6	
17	151	138.23	121.76	93		40	14.6	
18	159	146.27	130.39	93		40	14.6	
19	167	154.32	137.91	93		40	14.6	
20	176	162.37	146.49	93		40	14.6	
21	184	170.42	154.06	93		40	14.6	
22	192	178.48	162.60	107		45	14.6	
23	200	186.54	170.22	107		45	14.6	
24	208	194.60	178.72	107		45	14.6	
25	216	202.66	186.38	107		45	14.6	
26	224	210.72	194.84	107		45	14.6	
27	233	218.79	202.54	107		45	14.6	
28	241	226.86	210.98	107		45	14.6	
29	249	234.93	218.70	107		45	14.6	
30	257	243.00	227.12	107		45	14.6	
31	265	251.07	234.86	107		45	14.6	

RS80# (1" PICH) DIMENSIONS

Bánh Răng Xích (gù)
Chất Liệu S35C

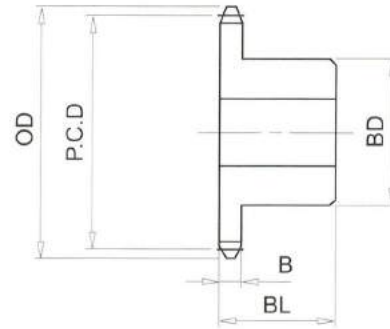
B Type Sprocket
Material S35C



No. of Teeth	Outside Diam. OD	Pitch Diam. P.C.D	Bottom or Capliper Diam.	BD	BL	B
32	273	259.14	243.26	107	45	14.6
33	281	267.21	251.03	107	45	14.6
34	289	275.28	259.40	107	45	14.6
35	297	283.36	267.19	107	45	14.6
36	306	291.43	275.55	117	50	14.6
37	314	299.51	283.36	117	50	14.6
38	322	307.58	291.70	117	50	14.6
39	330	315.66	299.52	117	50	14.6
40	338	323.74	307.86	117	50	14.6
41	346	331.81	315.69	117	50	14.6
42	354	339.89	324.01	117	50	14.6
43	362	347.97	331.86	117	50	14.6
44	370	356.05	340.17	117	50	14.6
45	378	364.12	348.02	117	50	14.6
46	387	372.20	356.32	117	50	14.6
47	395	380.28	364.19	117	50	14.6
48	403	388.36	372.48	117	50	14.6
49	411	396.44	380.36	117	50	14.6
50	419	404.52	388.64	117	50	14.6
51	427	412.60	396.52	117	50	14.6
52	435	420.68	404.80	117	50	14.6
53	443	428.76	412.69	117	50	14.6
54	451	436.84	420.96	117	50	14.6
55	459	444.92	428.86	117	50	14.6

RS80# (1" PICH) DIMENSIONS

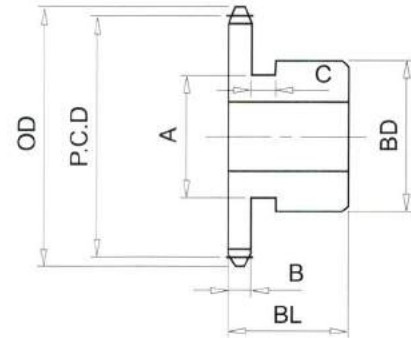
Bánh Răng Xích (gù)
 Chất Liệu S35C
 B Type Sprocket
 Material S35C



No. of Teeth	Outside Diam. OD	Pitch Diam. P.C.D	Bottom or Capliper Diam.	BD	BL	B
56	468	453.00	437.12	117	50	14.6
57	476	461.08	445.03	117	50	14.6
58	484	469.16	453.28	117	50	14.6
59	492	477.24	461.20	117	50	14.6
60	500	485.33	469.45	117	50	14.6
61	508	493.41	477.36	127	50	14.6
62	516	501.49	485.61	127	50	14.6
63	524	509.57	493.53	127	50	14.6
64	532	517.65	501.77	127	50	14.6
65	540	525.73	509.70	127	63	14.6
66	548	533.82	517.94	127	63	14.6
67	557	541.90	525.87	127	63	14.6
68	565	549.98	534.10	127	63	14.6
69	573	558.06	542.04	127	63	14.6
70	581	566.15	550.27	127	63	14.6
71	589	574.23	558.21	127	63	14.6
72	597	582.31	566.43	127	63	14.6
73	605	590.39	574.38	127	63	14.6
74	613	598.48	582.60	127	63	14.6
75	621	606.56	590.54	127	63	14.6
76	629	614.64	598.76	127	63	14.6
77	637	622.72	606.71	127	63	14.6
78	646	630.81	614.93	127	63	14.6
79	654	638.89	622.88	127	63	14.6
80	662	646.97	631.09	137	71	14.6

RS100# (11/4" PICH) DIMENSIONS

Bánh Răng Xích (gù)
 Chất Liệu S35C
 B Type Sprocket
 Material S35C

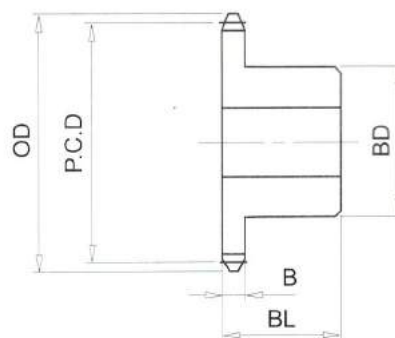


No. of Teeth	Outside Diam. OD	Pitch Diam. P.C.D	Bottom or Capliper Diam.	A	BD	BL	B
8	96	82.97	63.92	50	60	50	17.6
9	106	92.83	73.37	52	70	50	17.6
10	117	102.75	83.70	65	80	50	17.6
11	127	112.70	92.50	75	50	50	17.6
12	138	122.67	103.62	86	50	50	17.6
13	148	132.67	112.65	94	50	50	17.6
14	158	142.68	123.63	98	50	50	17.6
15	168	152.71	132.82	98	50	50	17.6
16	179	162.75	143.70	98	50	50	17.6
17	189	172.79	153.00	107	50	50	17.6
18	199	182.84	163.79	107	50	50	17.6
19	209	192.90	173.19	107	50	50	17.6
20	220	202.96	183.91	107	50	50	17.6
21	230	213.03	193.38	107	50	50	17.6
22	240	223.10	204.05	117	56	56	17.6
23	250	233.17	213.58	117	56	56	17.6
24	260	243.25	224.20	117	56	56	17.6
25	270	253.32	233.77	117	56	56	17.6
26	281	263.41	244.36	117	56	56	17.6
27	291	273.49	253.98	117	56	56	17.6
28	301	283.57	264.52	117	56	56	17.6
29	311	293.66	274.18	117	56	56	17.6
30	321	303.75	284.70	117	56	56	17.6
31	331	313.83	294.38	117	56	56	17.6

RS100# (11/4" PICH) DIMENSIONS

Bánh Răng Xích (gù)
Chất Liệu S35C

B Type Sprocket
Material S35C



No. of Teeth	Outside Diam. OD	Pitch Diam. P.C.D	Bottom or Capliper Diam.	BD	BL	B
32	341	323.92	304.87	117	56	17.6
33	352	334.01	314.59	117	56	17.6
34	362	344.10	325.05	117	56	17.6
35	372	354.20	334.79	117	63	17.6
36	382	364.29	345.24	127	63	17.6
37	392	374.38	355.00	127	63	17.6
38	402	384.48	365.43	127	63	17.6
39	412	394.57	375.20	127	63	17.6
40	422	404.67	385.62	127	63	17.6
41	433	414.77	395.41	127	63	17.6
42	443	424.86	405.81	127	63	17.6
43	453	434.96	415.62	127	63	17.6
44	463	445.06	426.01	127	63	17.6
45	473	455.15	435.83	127	63	17.6
46	483	465.25	446.20	127	63	17.6
47	493	475.35	456.04	127	63	17.6
48	503	485.45	466.40	127	63	17.6
49	514	495.55	476.25	127	63	17.6
50	524	505.65	486.60	127	63	17.6
51	534	515.75	496.45	127	63	17.6
52	544	525.85	506.80	127	63	17.6
53	554	535.95	516.66	127	63	17.6
54	564	546.05	527.00	147	80	17.6
55	574	556.15	536.87	147	80	17.6

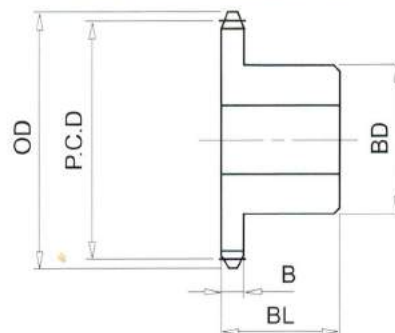
RS100# (11/4" PICH) DIMENSIONS

Bánh Răng Xích (gù)

Chất Liệu S35C

B Type Sprocket

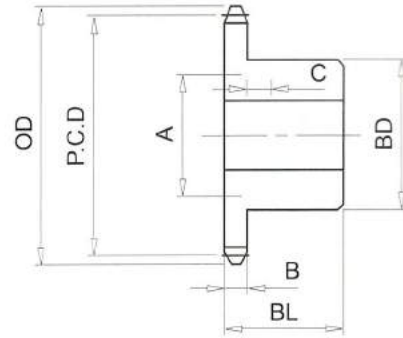
Material S35C



No. of Teeth	Outside Diam. OD	Pitch Diam. P.C.D	Bottom or Capliper Diam.	BD	BL	B
56	584	566.25	547.20	147	80	17.6
57	595	576.35	557.08	147	80	17.6
58	605	586.45	567.40	147	80	17.6
59	615	596.56	577.29	147	80	17.6
60	625	606.66	587.61	147	80	17.6
61	635	616.76	597.50	147	80	17.6
62	645	626.86	607.81	147	80	17.6
63	655	636.96	617.72	147	80	17.6
64	665	647.07	628.02	147	80	17.6
65	675	657.17	637.93	147	80	17.6
66	686	667.27	648.22	147	80	17.6
67	696	677.37	658.14	147	80	17.6
68	706	687.48	668.43	147	80	17.6
69	716	697.58	678.35	147	80	17.6
70	726	707.68	688.63	147	100	17.6
71	736	717.78	698.56	147	100	17.6
72	746	727.89	708.84	147	100	17.6
73	756	737.99	718.77	147	100	17.6
74	766	748.09	729.04	147	100	17.6
75	777	758.20	738.98	147	100	17.6
76	787	768.30	749.25			
77	797	778.40	759.19			
78	807	788.51	769.46			
79	817	798.61	779.40			
80	827	808.71	789.66			

RS120# (11/2" PICH) DIMENSIONS

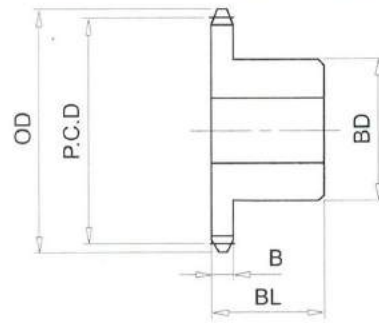
Bánh Răng Xích (gù)
 Chất Liệu S35C
 B Type Sprocket
 Material S35C



No. of Teeth	Outside Diam. OD	Pitch Diam. P.C.D	Bottom or Capliper Diam.	BD	BL	B
8	115	99.56	77.33	60	56	23.5
9	128	111.40	87.47	70	56	23.5
10	140	123.29	101.06	78	56	23.5
11	153	135.23	111.63	91	56	23.5
12	165	147.21	124.98	98	56	23.5
13	177	159.20	135.81	98	56	23.5
14	190	171.22	148.99	107	56	23.5
15	202	183.25	160.02	117	63	23.5
16	214	195.29	173.06	117	63	23.5
17	227	207.35	184.23	117	63	23.5
18	239	219.41	197.18	117	63	23.5
19	251	231.48	208.46	117	63	23.5
20	263	243.55	221.32	127	63	23.5
21	276	255.63	232.69	127	63	23.5
22	288	267.72	245.49	127	63	23.5
23	300	279.80	256.92	127	63	23.5
24	312	291.90	269.67	127	63	23.5
25	324	303.99	281.16	127	63	23.5
26	337	316.09	293.86	127	63	23.5
27	349	328.19	305.40	127	63	23.5
28	361	340.29	318.06	137	71	23.5
29	373	352.39	329.64	137	71	23.5
30	385	364.49	342.26	137	71	23.5
31	398	376.60	353.89	137	71	23.5

RS120# (11/2" PICH) DIMENSIONS

Bánh Răng Xích (gù)
 Chất Liệu S35C
 B Type Sprocket
 Material S35C

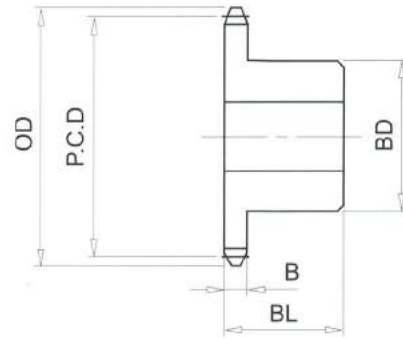


No. of Teeth	Outside Diam. OD	Pitch Diam. P.C.D	Bottom or Capliper Diam.	BD	BL	B
32	410	388.71	366.48	137	71	23.5
33	422	400.82	378.13	137	71	23.5
34	434	412.93	390.70	137	71	23.5
35	446	425.04	402.38	137	71	23.5
36	458	437.15	414.92	137	71	23.5
37	471	449.26	426.63	137	71	23.5
38	483	461.37	439.14	137	71	23.5
39	495	473.49	450.87	137	71	23.5
40	507	485.60	463.37	147	80	23.5
41	519	497.72	475.12	147	80	23.5
42	531	509.83	487.60	147	80	23.5
43	543	521.95	499.37	147	80	23.5
44	556	534.07	511.84	147	80	23.5
45	568	546.19	523.62	147	80	23.5
46	580	558.30	536.07	147	80	23.5
47	592	570.42	547.87	147	80	23.5
48	604	582.54	560.31	147	80	23.5
49	616	594.66	572.12	147	80	23.5
50	628	606.78	584.55	147	80	23.5
51	641	618.90	596.38	147	80	23.5
52	653	631.02	608.79	147	80	23.5
53	665	643.14	620.63	147	80	23.5
54	677	655.26	633.03	147	100	23.5
55	689	667.38	644.88	147	100	23.5

RS120# (1 1/2" PICH) DIMENSIONS

Bánh Răng Xích (gù)
 Chất Liệu S35C

B Type Sprocket
 Material S35C

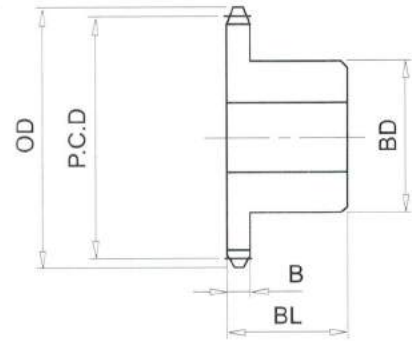


No. of Teeth	Outside Diam. OD	Pitch Diam. P.C.D	Bottom or Capliper Diam.	BD	BL	B
56	701	679.50	657.27	147	100	23.5
57	713	691.62	669.13	147	100	23.5
58	726	703.75	681.52	147	100	23.5
59	738	715.87	693.38	147	100	23.5
60	750	727.99	705.76	167	100	23.5
61	762	740.11	717.64			
62	774	752.23	730.00			
63	786	764.36	741.89			
64	798	776.48	754.25			
65	811	788.60	766.14			
66	823	800.72	778.49			
67	835	812.85	790.39			
68	847	824.97	802.74			
69	859	837.09	814.65			
70	871	849.22	826.99			
71	883	861.34	838.90			
72	895	873.46	851.23			
73	908	885.59	863.15			
74	920	897.71	875.48			
75	932	909.84	887.41			
76	944	921.96	899.73			
77	956	934.09	911.66			
78	968	946.21	923.98			
79	980	958.33	935.91			
80	993	970.46	948.23			

RS140# (13/4" PICH) DIMENSIONS

Bánh Răng Xích (gù)
 Chất Liệu S35C

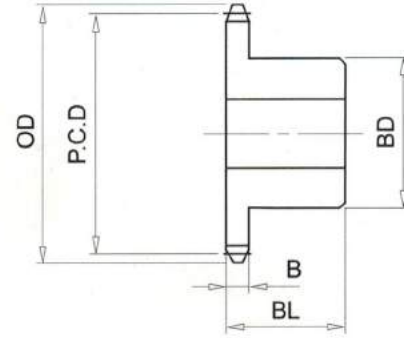
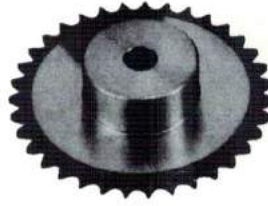
B Type Sprocket
 Material S35C



No. of Teeth	Outside Diam. OD	Pitch Diam. P.C.D	Bottom or Capliper Diam.	BD	BL	B
8	134	116.15	90.75	75	56	23.5
9	149	129.96	102.59	85	56	23.5
10	163	143.84	118.44	98	56	23.5
11	178	157.77	130.77	106	56	23.5
12	193	171.74	146.34	117	56	23.5
13	207	185.74	158.98	117	63	23.5
14	221	199.76	174.36	127	63	23.5
15	236	213.79	187.22	127	63	23.5
16	250	227.84	202.44	127	63	23.5
17	264	241.91	215.47	127	63	23.5
18	279	255.98	230.58	127	63	23.5
19	293	270.06	243.74	137	71	23.5
20	307	284.14	258.74	137	71	23.5
21	322	298.24	272.00	137	71	23.5
22	336	312.34	286.94	137	71	23.5
23	350	326.44	300.28	137	71	23.5
24	364	340.54	315.14	137	71	23.5
25	379	354.65	328.55	147	80	23.5
26	393	368.77	343.37	147	80	23.5
27	407	382.88	356.84	147	80	23.5
28	421	397.00	371.60	147	80	23.5
29	435	411.12	385.12	147	80	23.5
30	450	425.24	399.84	147	80	23.5
31	464	439.37	413.40	147	80	23.5
32	478	453.49	428.09	147	80	23.5
33	492	467.62	441.69	147	80	23.5
34	506	481.75	456.35	147	80	23.5

RS140# (13/4" PICH) DIMENSIONS

Bánh Răng Xích (gù)
 Chất Liệu S35C
 B Type Sprocket
 Material S35C

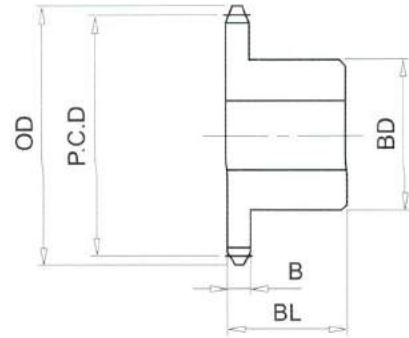


No. of Teeth	Outside Diam. OD	Pitch Diam. P.C.D	Bottom or Capliper Diam.	BD	BL	B
35	521	495.88	469.98	157	90	23.5
36	535	510.01	484.61	157	90	23.5
37	549	524.14	498.27	157	90	23.5
38	563	538.27	512.87	157	90	23.5
39	577	552.40	526.56	157	90	23.5
40	591	566.54	541.14	157	90	23.5
41	606	580.67	554.85	157	90	23.5
42	620	594.81	569.41	157	90	23.5
43	634	608.94	583.14	157	90	23.5
44	648	623.08	597.68	157	90	23.5
45	662	637.22	611.43	167	100	23.5
46	677	651.35	625.95	167	100	23.5
47	691	665.49	639.72	167	100	23.5
48	705	679.63	654.23	167	100	23.5
49	719	693.77	668.01	167	100	23.5
50	733	707.91	682.51	167	100	23.5
51	747	722.05	696.31	167	100	23.5
52	762	736.19	710.79	167	100	23.5
53	776	750.33	724.60	167	100	23.5
54	790	764.47	739.07	167	100	23.5
55	804	778.61	752.89	167	100	23.5
56	818	792.75	767.35	167	100	23.5
57	832	806.89	781.19	167	100	23.5
58	847	821.04	795.64	167	100	23.5
59	861	835.18	809.48	167	100	23.5
60	875	849.32	823.92	167	112	23.5

RS160# (2" PICH) DIMENSIONS

Bánh Răng Xích (gù)
 Chất Liệu S35C

B Type Sprocket
 Material S35C



No. of Teeth	Outside Diam. OD	Pitch Diam. PD	Bottom or Capliper Diam.	DH	BL	B
8	153	132.75	104.17	80	63	29.4
9	170	148.53	117.69	90	63	29.4
10	187	164.39	135.81	105	63	29.4
11	203	180.31	149.90	117	63	29.4
12	220	196.28	167.70	127	63	29.4
13	237	212.27	182.14	137	71	29.4
14	253	228.29	199.71	137	71	29.4
15	269	244.33	214.42	137	71	29.4
16	286	260.39	231.81	147	71	29.4
17	302	276.46	246.70	147	71	29.4
18	319	292.55	263.97	147	71	29.4
19	335	308.64	279.00	147	71	29.4
20	351	324.74	296.16	147	71	29.4
21	368	340.84	311.31	147	71	29.4
22	384	356.96	328.38	167	80	29.4
23	400	373.07	343.62	167	80	29.4
24	416	389.19	360.61	167	80	29.4
25	433	405.32	375.94	167	80	29.4
26	449	421.45	392.87	167	80	29.4
27	465	437.58	408.26	167	80	29.4
28	481	453.72	425.14	167	80	29.4
29	498	469.85	440.58	167	80	29.4
30	514	485.99	457.41	167	100	29.4
31	530	502.13	472.91	167	100	29.4
32	546	518.28	489.70	167	100	29.4
33	562	534.42	505.24	167	100	29.4
34	579	550.57	521.99	167	100	29.4

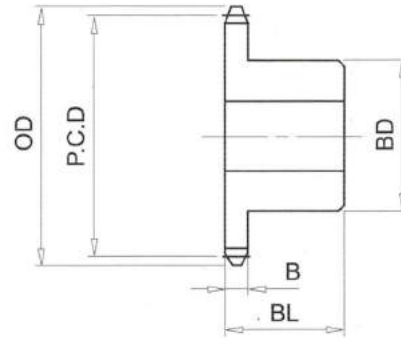
RS160# (2" PICH) DIMENSIONS

Bánh Răng Xích (gù)

Chất Liệu S35C

B Type Sprocket

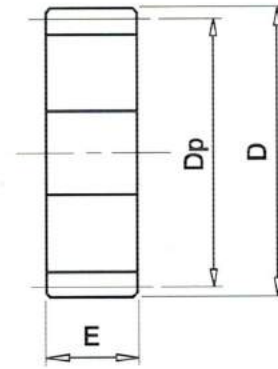
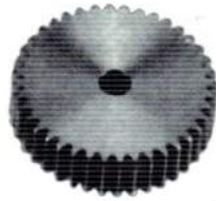
Material S35C



No. of Teeth	Outside Diam. OD	Pitch Diam. P.C.D	Bottom or Capliper Diam.	BD	BL	B
35	595	566.72	537.57	167	100	29.4
36	611	582.86	554.28	167	100	29.4
37	627	599.01	569.90	167	100	29.4
38	644	615.17	586.59	167	100	29.4
39	660	631.32	602.22	167	100	29.4
40	676	647.47	618.89	167	112	29.4
41	692	663.63	634.56	167	112	29.4
42	708	679.78	651.20	167	112	29.4
43	725	695.94	666.89	167	112	29.4
44	741	712.09	683.51	167	112	29.4
45	757	728.25	699.22	187	125	29.4
46	773	744.41	715.83	187	125	29.4
47	789	760.56	731.56	187	125	29.4
48	806	776.72	748.14	187	125	29.4
49	822	792.88	763.89	187	125	29.4
50	838	809.04	780.46	187	125	29.4
51	854	825.20	796.23	187	125	29.4
52	870	841.36	812.78	187	125	29.4
53	886	857.52	828.56	187	125	29.4
54	903	873.68	845.10	187	125	29.4
55	919	889.84	860.90	187	125	29.4
56	935	906.00	877.42	187	125	29.4
57	951	922.16	893.23	187	125	29.4
58	967	938.33	909.75	187	125	29.4
59	984	954.49	925.57	187	125	29.4
60	1000	970.65	942.07	187	125	29.4

Bánh Răng Trụ
 Mô đun $M = 1$
 Góc ăn khớp $\alpha = 20^\circ$
 Chất liệu **S45C**

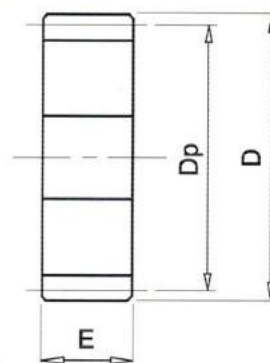
A Type Spur Gear
 Modulus : $M = 1$
 Pressure Angle 20°
 Material **S45C**



T	Dp	D	E	T	Dp	D	E
15	15	17	10	37	37	39	10
16	16	18	10	38	38	40	10
17	17	19	10	39	39	41	10
18	18	20	10	40	40	42	10
19	19	21	10	41	41	43	10
20	20	22	10	42	42	44	10
21	21	23	10	43	43	45	10
22	22	24	10	44	44	46	10
23	23	25	10	45	45	47	10
24	24	26	10	46	46	48	10
25	25	27	10	47	47	49	10
26	26	28	10	48	48	50	10
27	27	29	10	49	49	51	10
28	28	30	10	50	50	52	10
29	29	31	10	55	55	57	10
30	30	32	10	60	60	62	10
31	31	33	10	65	65	67	10
32	32	34	10	70	70	72	10
33	33	35	10	75	75	77	10
34	34	36	10	80	80	82	10
35	35	37	10	85	85	87	10
36	36	38	10	90	90	92	10

Bánh Răng Trụ
 Mô đun $M = 1.5$
 Góc ăn khớp $\alpha = 20^\circ$
 Chất liệu **S45C**

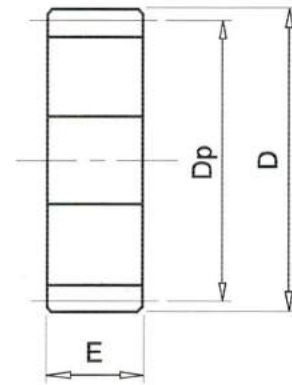
A Type Spur Gear
 Modulus : $M = 1.5$
 Pressure Angle 20°
 Material **S45C**



T	Dp	D	E	T	Dp	D	E
15	22.5	25.5	15	37	55.5	58.5	15
16	24	27	15	38	57	60	15
17	25.5	28.5	15	39	58.5	61.5	15
18	27	30	15	40	60	63	15
19	28.5	31.5	15	41	61.5	64.5	15
20	30	33	15	42	63	66	15
21	31.5	34.5	15	43	64.5	67.5	15
22	33	36	15	44	66	69	15
23	34.5	37.5	15	45	67.5	70.5	15
24	36	39	15	46	69	72	15
25	37.5	40.5	15	47	70.5	73.5	15
26	39	42	15	48	72	75	15
27	40.5	43.5	15	49	73.5	76.5	15
28	42	45	15	50	75	78	15
29	43.5	46.5	15	55	82.5	85.5	15
30	45	48	15	60	90	93	15
31	46.5	49.5	15	65	97.5	100.5	15
32	48	51	15	70	105	108	15
33	49.5	52.5	15	75	112.5	115.5	15
34	51	54	15	80	120	123	15
35	52.5	55.5	15	85	127.5	130.5	15
36	54	57	15	90	135	138	15

Bánh Răng Trụ
 Mô đun **M = 2**
 Góc ăn khớp $\alpha 20^\circ$
 Chất liệu **S45C**

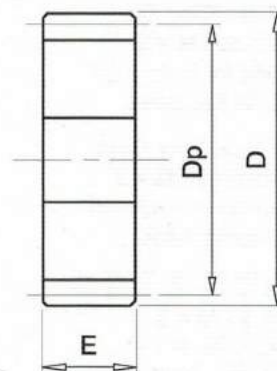
A Type Spur Gear
 Modulus : **M = 2**
 Pressure Angle 20°
 Material **S45C**



T	Dp	D	E		T	Dp	D	E
15	30	34	20		37	74	78	20
16	32	36	20		38	76	80	20
17	34	38	20		39	78	82	20
18	36	40	20		40	80	84	20
19	38	42	20		41	82	86	20
20	40	44	20		42	84	88	20
21	42	46	20		43	86	90	20
22	44	48	20		44	88	92	20
23	46	50	20		45	90	94	20
24	48	52	20		46	92	96	20
25	50	54	20		47	94	98	20
26	52	56	20		48	96	100	20
27	54	58	20		49	98	102	20
28	56	60	20		50	100	104	20
29	58	62	20		55	110	114	20
30	60	64	20		60	120	124	20
31	62	66	20		65	130	134	20
32	64	68	20		70	140	144	20
33	66	70	20		75	150	154	20
34	68	72	20		80	160	164	20
35	70	74	20		85	170	174	20
36	72	76	20		90	180	184	20

Bánh Răng Trụ
 Mô đun $M = 2.5$
 Góc ăn khớp $\alpha = 20^\circ$
 Chất liệu **S45C**

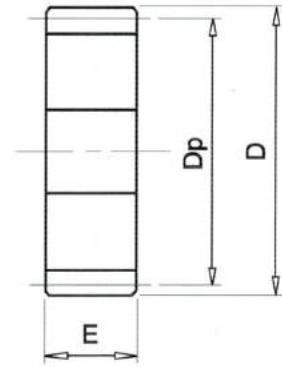
A Type Spur Gear
 Modulus : $M = 2.5$
 Pressure Angle 20°
 Material **S45C**



T	Dp	D	E	T	Dp	D	E
15	37.5	42.5	24	37	92.5	97.5	24
16	40	45	24	38	95	100	24
17	42.5	47.5	24	39	97.5	102.5	24
18	45	50	24	40	100	105	24
19	47.5	52.5	24	41	102.5	107.5	24
20	50	55	24	42	105	110	24
21	52.5	57.5	24	43	107.5	112.5	24
22	55	60	24	44	110	115	24
23	57.5	62.5	24	45	112.5	117.5	24
24	60	65	24	46	115	120	24
25	62.5	67.5	24	47	117.5	122.5	24
26	65	70	24	48	120	125	24
27	67.5	72.5	24	49	122.5	127.5	24
28	70	75	24	50	125	130	24
29	72.5	77.5	24	55	137.5	142.5	24
30	75	80	24	60	150	155	24
31	77.5	82.5	24	65	162.5	167.5	24
32	80	85	24	70	175	180	24
33	82.5	87.5	24	75	187.5	192.5	24
34	85	90	24	80	200	205	24
35	87.5	92.5	24	85	212.5	217.5	24
36	90	95	24	90	225	230	24

Bánh Răng Trụ
 Mô đun **M = 3**
 Góc ăn khớp $\alpha = 20^\circ$
 Chất liệu **S45C**

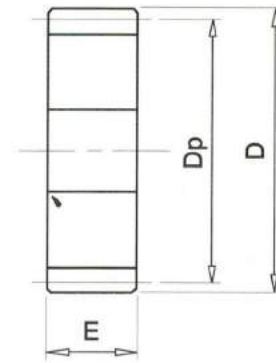
A Type Spur Gear
 Modulus : **M = 3**
 Pressure Angle 20°
 Material **S45C**



T	Dp	D	E		T	Dp	D	E
15	45	51	28		37	111	117	28
16	48	54	28		38	114	120	28
17	51	57	28		39	117	123	28
18	54	60	28		40	120	126	28
19	57	63	28		41	123	129	28
20	60	66	28		42	126	132	28
21	63	69	28		43	129	135	28
22	66	72	28		44	132	138	28
23	69	75	28		45	135	141	28
24	72	78	28		46	138	144	28
25	75	81	28		47	141	147	28
26	78	84	28		48	144	150	28
27	81	87	28		49	147	153	28
28	84	90	28		50	150	156	28
29	87	93	28		55	165	171	28
30	90	96	28		60	180	186	28
31	93	99	28		65	195	201	28
32	96	102	28		70	210	216	28
33	99	105	28		75	225	231	28
34	102	108	28		80	240	246	28
35	105	111	28					
36	108	114	28					

Bánh Răng Trụ
 Mô đun **M = 4**
 Góc ăn khớp $\alpha 20^\circ$
 Chất liệu **S45C**

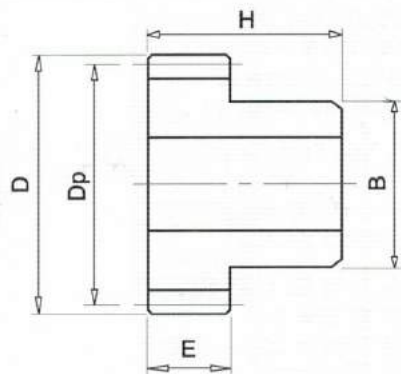
A Type Spur Gear
 Modulus : **M = 4**
 Pressure Angle 20°
 Material **S45C**



T	Dp	D	E		T	Dp	D	E
15	60	68	32		37	148	156	32
16	64	72	32		38	152	160	32
17	68	76	32		39	156	164	32
18	72	80	32		40	160	168	32
19	76	84	32		41	164	172	32
20	80	88	32		42	168	176	32
21	84	92	32		43	172	180	32
22	88	96	32		44	176	184	32
23	92	100	32		45	180	188	32
24	96	104	32		46	184	192	32
25	100	108	32		47	188	196	32
26	104	112	32		48	192	200	32
27	108	116	32		49	196	204	32
28	112	120	32		50	200	208	32
29	116	124	32		55	220	228	32
30	120	128	32		60	240	248	32
31	124	132	32		65	260	268	32
32	128	136	32		70	280	288	32
33	132	140	32					
34	136	144	32					
35	140	148	32					
36	144	152	32					

Bánh răng trụ (gù)
 Mô đun **M = 1**
 Góc ăn khớp $\alpha = 20^\circ$
 Chất liệu **S45C**

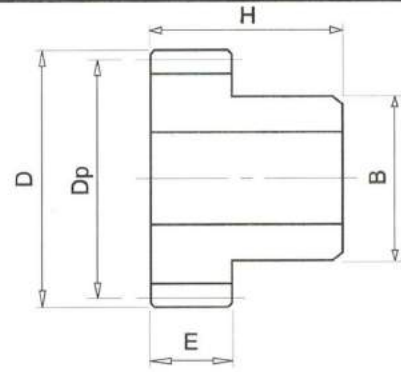
B Type Spur Gear
 Modulus : **M = 1**
 Pressure Angle 20°
 Material **S45C**



T	Dp	D	E	H	B	T	Dp	D	E	H	B
15	15	17	10	20	12	37	37	39	10	20	34
16	16	18	10	20	13	38	38	40	10	20	35
17	17	19	10	20	14	39	39	41	10	20	36
18	18	20	10	20	15	40	40	42	10	20	36
19	19	21	10	20	16	41	41	43	10	20	38
20	20	22	10	20	17	42	42	44	10	20	38
21	21	23	10	20	18	43	43	45	10	20	40
22	22	24	10	20	19	44	44	46	10	20	40
23	23	25	10	20	20	45	45	47	10	20	42
24	24	26	10	20	21	46	46	48	10	20	42
25	25	27	10	20	22	47	47	49	10	20	44
26	26	28	10	20	23	48	48	50	10	20	45
27	27	29	10	20	24	49	49	51	10	20	45
28	28	30	10	20	25	50	50	52	10	20	46
29	29	31	10	20	26	55	55	57	10	20	50
30	30	32	10	20	27	60	60	62	10	20	55
31	31	33	10	20	28	65	65	67	10	20	60
32	32	34	10	20	29	70	70	72	10	20	65
33	33	35	10	20	30	75	75	77	10	20	70
34	34	36	10	20	30	80	80	82	10	20	74
35	35	37	10	20	32	85	85	87	10	20	78
36	36	38	10	20	32	90	90	92	10	20	80

Bánh răng trụ (gù)
 Mô đun $M = 1.5$
 Góc ăn khớp $\alpha = 20^\circ$
 Chất liệu **S45C**

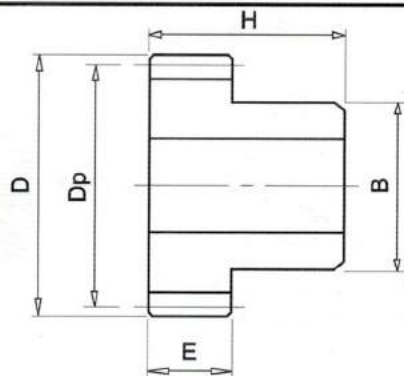
B Type Spur Gear
 Modulus : $M = 1.5$
 Pressure Angle 20°
 Material **S45C**



T	Dp	D	E	H	B	T	Dp	D	E	H	B
15	22.5	25.5	15	28	18	37	55.5	58.5	15	28	50
16	24	27	15	28	20	38	57	60	15	28	52
17	25.5	28.5	15	28	20	39	58.5	61.5	15	28	52
18	27	30	15	28	23	40	60	63	15	28	54
19	28.5	31.5	15	28	24	41	61.5	64.5	15	28	55
20	30	33	15	28	26	42	63	66	15	28	58
21	31.5	34.5	15	28	27	43	64.5	67.5	15	28	58
22	33	36	15	28	28	44	66	69	15	28	60
23	34.5	37.5	15	28	30	45	67.5	70.5	15	28	62
24	36	39	15	28	32	46	69	72	15	28	62
25	37.5	40.5	15	28	33	47	70.5	73.5	15	28	62
26	39	42	15	28	35	48	72	75	15	28	62
27	40.5	43.5	15	28	36	49	73.5	76.5	15	28	65
28	42	45	15	28	38	50	75	78	15	28	65
29	43.5	46.5	15	28	39	55	82.5	85.5	15	28	
30	45	48	15	28	40	60	90	93	15	28	
31	46.5	49.5	15	28	42	65	97.5	100.5	15	28	
32	48	51	15	28	44	70	105	108	15	28	
33	49.5	52.5	15	28	45	75	112.5	115.5	15	28	
34	51	54	15	28	46	80	120	123	15	28	
35	52.5	55.5	15	28	48	85	127.5	130.5	15	28	
36	54	57	15	28	50	90	135	138	15	28	

Bánh răng trụ (gù)
 Mô đun $M = 2$
 Góc ăn khớp $\alpha = 20^\circ$
 Chất liệu **S45C**

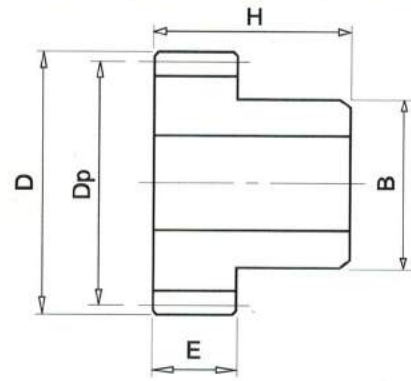
B Type Spur Gear
 Modulus : $M = 2$
 Pressure Angle 20°
 Material **S45C**



T	Dp	D	E	H	B	T	Dp	D	E	H	B
15	30	34	20	35	24	37	74	78	20	35	65
16	32	36	20	35	26	38	76	80	20	35	65
17	34	38	20	35	28	39	78	82	20	35	70
18	36	40	20	35	30	40	80	84	20	35	70
19	38	42	20	35	32	41	82	86	20	35	72
20	40	44	20	35	34	42	84	88	20	35	72
21	42	46	20	35	36	43	86	90	20	35	75
22	44	48	20	35	38	44	88	92	20	35	75
23	46	50	20	35	40	45	90	94	20	35	80
24	48	52	20	35	42	46	92	96	20	35	80
25	50	54	20	35	42	47	94	98	20	35	85
26	52	56	20	35	45	48	96	100	20	35	85
27	54	58	20	35	48	49	98	102	20	35	90
28	56	60	20	35	50	50	100	104	20	35	90
29	58	62	20	35	50						
30	60	64	20	35	52						
31	62	66	20	35	54						
32	64	68	20	35	56						
33	66	70	20	35	58						
34	68	72	20	35	60						
35	70	74	20	35	60						
36	72	76	20	35	62						

Bánh răng Trụ (gù)
 Mô đun **M = 2.5**
 Góc ăn khớp $\alpha = 20^\circ$
 Chất liệu **S45C**

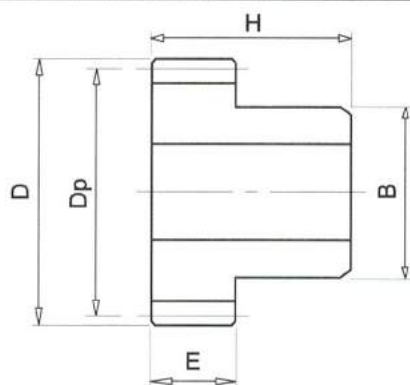
B Type Spur Gear
 Modulus : **M = 2.5**
 Pressure Angle 20°
 Material **S45C**



T	Dp	D	E	H	B	T	Dp	D	E	H	B
15	37.5	42.5	24	40	30	37	92.5	97.5	24	40	80
16	40	45	24	40	32	38	95	100	24	40	85
17	42.5	47.5	24	40	35	39	97.5	102.5	24	40	85
18	45	50	24	40	38	40	100	105	24	40	90
19	47.5	52.5	24	40	40	41	102.5	107.5	24	40	90
20	50	55	24	40	42	42	105	110	24	40	95
21	52.5	57.5	24	40	42	43	107.5	112.5	24	40	95
22	55	60	24	40	46	44	110	115	24	40	98
23	57.5	62.5	24	40	48	45	112.5	117.5	24	40	100
24	60	65	24	40	50	46	115	120	24	40	100
25	62.5	67.5	24	40	55	47	117.5	122.5	24	40	100
26	65	70	24	40	55	48	120	125	24	40	100
27	67.5	72.5	24	40	60	49	122.5	127.5	24	40	110
28	70	75	24	40	60	50	125	130	24	40	110
29	72.5	77.5	24	40	65						
30	75	80	24	40	65						
31	77.5	82.5	24	40	70						
32	80	85	24	40	70						
33	82.5	87.5	24	40	75						
34	85	90	24	40	75						
35	87.5	92.5	24	40	78						
36	90	95	24	40	80						

Bánh răng Trụ (gù)
 Mô đun **M = 3**
 Góc ăn khớp $\alpha = 20^\circ$
 Chất liệu **S45C**

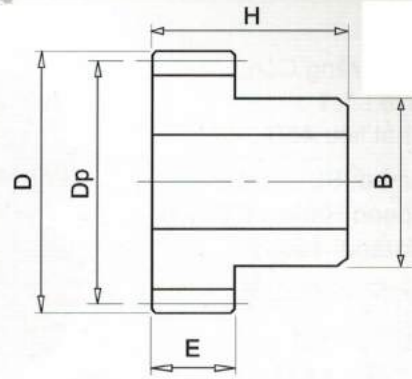
B Type Spur Gear
 Modulus : **M = 3**
 Pressure Angle 20°
 Material **S45C**



T	Dp	D	E	H	B	T	Dp	D	E	H	B
15	45	51	28	46	36	37	111	117	28	46	100
16	48	54	28	46	38	38	114	120	28	46	100
17	51	57	28	46	40	39	117	123	28	46	100
18	54	60	28	46	42	40	120	126	28	46	110
19	57	63	28	46	48	41	123	129	28	46	110
20	60	66	28	46	50	42	126	132	28	46	110
21	63	69	28	46	55	43	129	135	28	46	120
22	66	72	28	46	55	44	132	138	28	46	120
23	69	75	28	46	60	45	135	141	28	46	120
24	72	78	28	46	60	46	138	144	28	46	120
25	75	81	28	46	65	47	141	147	28	46	120
26	78	84	28	46	65	48	144	150	28	46	120
27	81	87	28	46	68	49	147	153	28	46	120
28	84	90	28	46	70	50	150	156	28	46	120
29	87	93	28	46	75						
30	90	96	28	46	75						
31	93	99	28	46	85						
32	96	102	28	46	85						
33	99	105	28	46	90						
34	102	108	28	46	90						
35	105	111	28	46	95						
36	108	114	28	46	95						

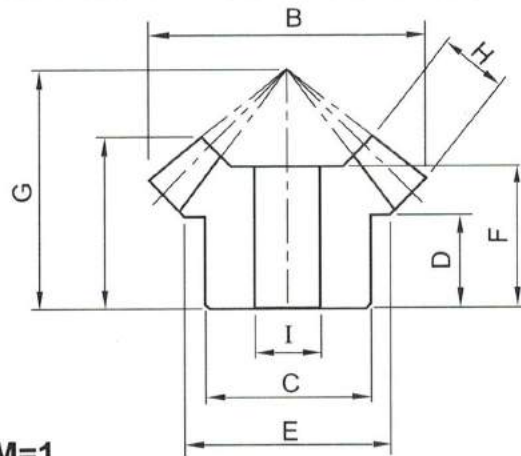
Bánh răng Trụ (gù)
 Mô đun $M = 4$
 Góc ăn khớp $\alpha 20^\circ$
 Chất liệu **S45C**

B Type Spur Gear
 Modulus : $M = 4$
 Pressure Angle 20°
 Material **S45C**



T	Dp	D	E	H	B	T	Dp	D	E	H	B
15	60	68	32	50	48	37	148	156	32	50	65
16	64	72	32	50	52	38	152	160	32	50	65
17	68	76	32	50	56	39	156	164	32	50	65
18	72	80	32	50	60	40	160	168	32	50	65
19	76	84	32	50	64	41	164	172	32	50	70
20	80	88	32	50	68	42	168	176	32	50	70
21	84	92	32	50	72	43	172	180	32	50	70
22	88	96	32	50	76	44	176	184	32	50	70
23	92	100	32	50	78	45	180	188	32	50	75
24	96	104	32	50	82	46	184	192	32	50	75
25	100	108	32	50	86	47	188	196	32	50	75
26	104	112	32	50	90	48	192	200	32	50	75
27	108	116	32	50	94	49	196	204	32	50	75
28	112	120	32	50	95	50	200	208	32	50	75
29	116	124	32	50	95						
30	120	128	32	50	95						
31	124	132	32	50	65						
32	128	136	32	50	65						
33	132	140	32	50	65						
34	136	144	32	50	65						
35	140	148	32	50	65						
36	144	152	32	50	65						

Bánh răng Côn
 Tỷ lệ : 1:1
 Chất liệu 45C
 Name: BEVEL GEAR
 Speed Ratio : 1:1
 Material 45C



Môđun M=1

Kích thước Số răng Dimension Number of teeth	A	B	C	D	E	F	G	H	I
18	13	19.41	16	8.5	16	11.9	18.36	4.5	6
20	14	21.41	16	9.0	18	12.9	20.00	5.0	6
24	15	25.41	20	9.5	22	13.85	22.63	5.5	8
25	16	26.41	20	10.5	23	14.88	23.79	6.0	8
30	19	31.41	22	11.0	24	17.825	28.91	6.5	8

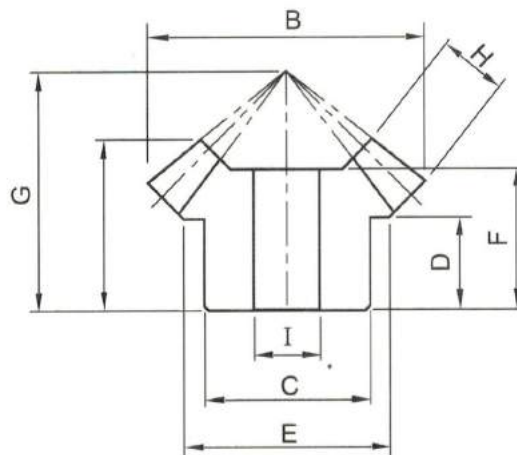
Môđun M=1.5

Kích thước Số răng Dimension Number of teeth	A	B	C	D	E	F	G	H	I
15	15	24.62	18.5	8.0	18.5	13.45	21.03	6.5	8
18	18	29.12	23	9.5	23	15.91	25.23	8	8
20	18.5	32.12	26	10.0	26	16.31	27.18	8	8
24	22	38.12	30	11.0	30	19.8	32.28	10	10
25	23	39.62	31.5	12.0	31.5	20.81	34.02	10	10
30	27	47.12	39	15.0	39	24.81	40.35	12	12

Môđun M=2

Kích thước Số răng Dimension Number of teeth	A	B	C	D	E	F	G	H	I
15	20	32.83	25	10.0	25	17.81	27.82	9	8
18	22	38.83	31	11.5	31	19.36	32.07	10	10
20	25	42.83	34	14.0	35	22.35	36.36	11	10
24	28.5	50.83	39	15.0	41	25.48	42.44	13	12
25	30.5	52.83	43	18.0	45	27.78	45.41	13	12
30	33.5	62.83	50	18.5	53	31.30	51.98	15	12

Bánh răng Côn
 Tỷ lệ : 1:1
 Chất liệu 45C
 Name: BEVEL GEAR
 Speed Ratio : 1:1
 Material 45C



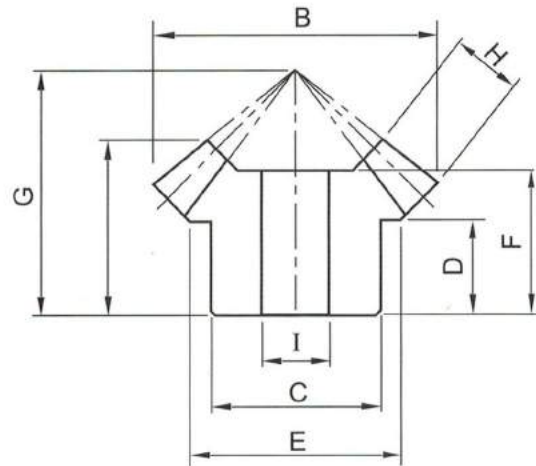
Môđun M=2.5

Kích thước Số răng Dimension Number of teeth	A	B	C	D	E	F	G	H	I
12	26	33.540	24	15.5	25	23.76	33	10	10
15	28	41.036	30	16.0	32	25.33	37.30	12	10
16	28	43.535	32	15.5	34.5	25.47	38.50	12	12
18	29	48.536	36	16.0	38	25.46	41.91	12	12
20	30	53.536	41	16.0	43	27.13	44.69	13	12
24	34	63.536	48	17.0	50	30.72	52.25	15	15
25	35	66.036	52	18.5	54	31.76	53.81	16	15
30	40	78.536	63	21.0	65	36.67	63.60	18	15

Môđun M=3

Kích thước Số răng Dimension Number of teeth	A	B	C	D	E	F	G	H	I
12	28	40.24	30	15.5	30	25.12	36.39	12	12
15	30	49.24	36	16.0	38	26.56	42.05	13	12
18	32	58.24	45	16.5	47	28.39	47.11	15	15
20	37	64.24	50	21.0	52	32.85	55.02	15	15
24	43	76.24	60	24.5	62	38.76	65.57	17	15
25	45	79.24	62	26.5	65	40.70	69.04	17	15
30	45	94.24	74	24.0	80	40.74	73.73	21	20

Bánh răng Côn
 Tỷ lệ : 1:1
 Chất liệu 45C
 Name: BEVEL GEAR
 Speed Ratio : 1:1
 Material 45C



Môđun M=3.5

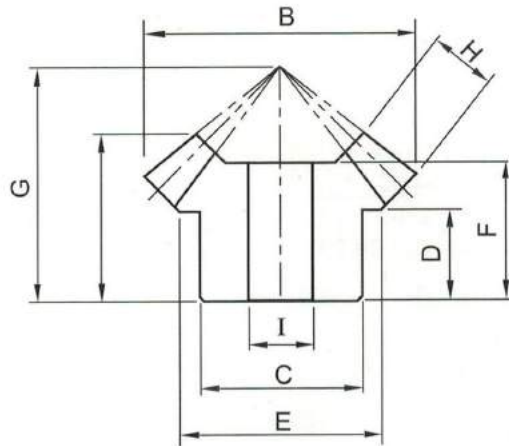
Kích thước Dimension Số răng Number of teeth	A	B	C	D	E	F	G	H	I
12									
15									
18									
20	40	79.95	58	20.5	60.0	35.04	60.70	18	15
24	42	88.95	70	21.0	74.0	37.25	68.22	20	20
25	44	92.45	72	22.0	76.0	39.26	71.27	21	20
30	49	109.95	90	23.0	93.5	44.67	81.51	26	20

Môđun M=4

Kích thước Dimension Số răng Number of teeth	A	B	C	D	E	F	G	H	I
12									
15	36	65.66	50	17.5	51.5	30.92	51.64	18	15
18	40	77.66	60	20.0	62.0	34.60	60.79	19	15
20	45	85.66	68	24.0	70.0	39.47	69.03	20	18
24	48	101.66	78	23.0	80.0	42.19	79.20	21	19
25	50	105.66	80	24.5	84.0	44.20	82.50	22	19
30	55	125.66	100	27.5	104	48.39	95.33	25	25

Bánh răng Côn
 Tỷ lệ : 1:1
 Chất liệu 45C
 Name: BEVEL GEAR
 Speed Ratio : 1:1
 Material 45C

品名: 傘齒輪
 速比: 1:1
 材質: 45C



Môđun M=5

Kích thước Số răng Dimension Number of teeth	A	B	C	D	E	F	G	H	I
12									
15	45	82.07	58	20.0	60	38.93	64.87	22	20
18	47	97.07	72	20.5	75	39.92	72.83	24	20
20	52	107.07	82	24.5	85	44.74	82.04	25	20
24	54	127.07	102	26.5	105	46.27	93.83	25	22
25	55	132.07	108	26.5	110	48.32	96.62	26	25
30	60	157.07	132	30.0	135	52.02	112.60	28	25

Môđun M=6

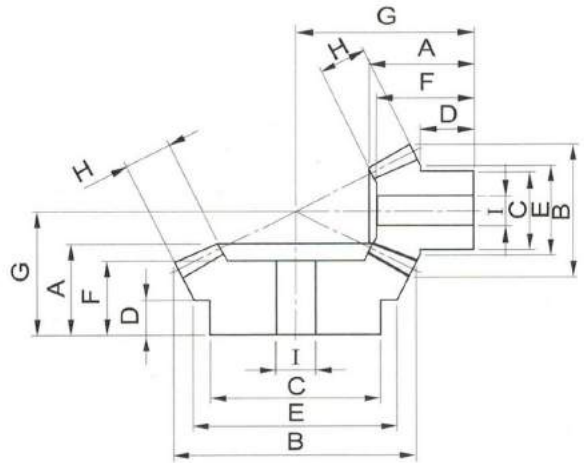
Kích thước Số răng Dimension Number of teeth	A	B	C	D	E	F	G	H	I
20	62	128.48	90	28	100	53.00	98.04	30	25
25	62	158.48	50	25	125	53.74	112.74	30	25

Môđun M=7

Kích thước Số răng Dimension Number of teeth	A	B	C	D	E	F	G	H	I
20	72	149.9	120	34.5	125	63.72	112.08	38	25

Bánh răng Côn
 Môđun : 1.5 - 4
 Chất liệu: S45C
 Tỷ lệ : 1/1.5
 Số răng : 20.30

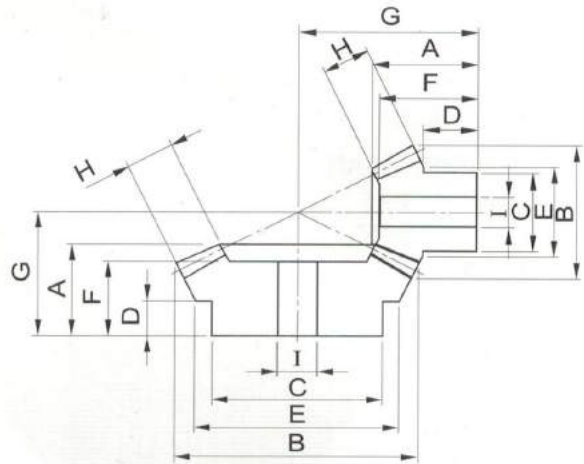
Name: BEVEL GEAR
 Modulus : 1.5 - 4
 Material : S45C
 Speed Ratio : 1/1.5
 Number of Teeth : 20.30



Mã số sản phẩm (Manuf.no.)	Mô đun (Modu.)	Số răng (Teeth)	A	B	C	D	E	F	G	H	I
A152030S	1.5	20	21	32.49	25	11.5	25	19.47	35.45	9	6
A152030L		30	23	46.66	35	13	39.59	20.29	32.18	9	10
A202030S	2	20	26	43.33	34	13.5	34	24.22	45.28	12	10
A202030L		30	26	62.22	45	13.5	53.9	22.67	38.23	12	12
A252030S	2.5	20	34	54.16	42	16.5	42	31.78	56.49	17	12
A252030L		30	34	77.77	60	16.5	65.99	29.42	48.27	17	15
A302030S	3	20	46	64.99	50	24	50	43.43	72.51	21	15
A302030L		30	45	93.33	65	24.5	80.29	39.90	61.82	21	18
A402030S	4	20	52	86.65	65	22.5	65	48.89	87.35	28	20
A402030L		30	48	124.43	80	23	110.02	42.59	70.43	28	20

Bánh răng Côn
 Môđun : 1 - 5
 Chất liệu : S45C
 Tỷ lệ : 1/2
 Số răng : 15.30

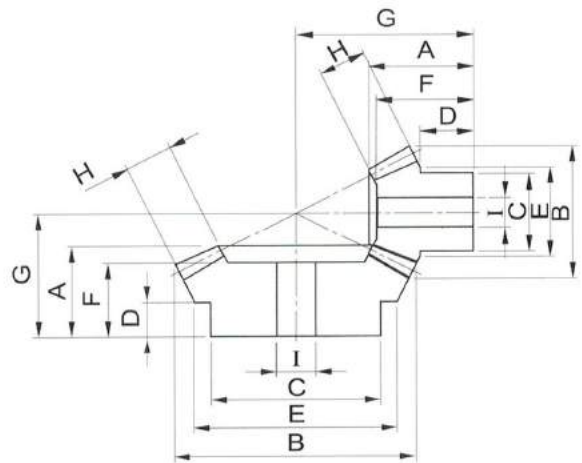
Name: BEVEL GEAR
 Modulus : 1 - 5
 Material : S45C
 Speed Ratio: 1/2
 Number of Teeth : 15.30



Mã số sản phẩm (Manuf.no.)	Môđun (Modu.)	Số răng (Teeth)	A	B	C	D	E	F	G	H	I
A101530S	1	15	18	16.79	12.50	11.50	12.50	17.31	27.35	6	6
A101530L		30	17	30.89	28	11.50	28	15.62	21.24	6	8
A151530S	1.5	15	22	25.18	18.25	11.50	18.25	21	35.15	10	8
A151530L		30	22	46.34	36	12.50	40.64	19.29	27.97	10	10
A201530S	2	15	25	33.58	25	12.50	25	23.66	43.69	12	10
A201530L		30	25	61.79	48	13.50	55	21.52	33.48	12	12
A251530S	2.5	15	31	41.91	31	15.5	31	29.16	54.36	15	12
A251530L		30	30	77.24	60	15.5	68.63	24.98	40.61	15	15
A301530S	3	15	35	50.37	37	16	37	33.02	63.04	18	12
A301530L		30	35	92.68	65	16.5	81.28	28.44	47.73	18	15
A401530S	4	15	50	67.16	50	24	50	47.39	86.52	25	20
A401530L		30	48	123.58	80	25	110.16	41.16	64.58	25	16
A501530S	5	15	65	83.94	62	33.5	62	61.68	111.73	30	20
A501530L		30	51	154.47	120	25	137.25	44.85	75.21	30	25

Bánh răng Côn
 Môđun : 1 - 5
 Chất liệu : S45C
 Tỷ lệ : 1/2
 Số răng : 18.36

Name: BEVEL GEAR
 Modulus : 1 - 5
 Material : S45C
 Speed Ratio : 1/2
 Number of Teeth : 18.36



Mã số sản phẩm (Manuf.no.)	Môđun (Modu.)	Số răng (Teeth)	A	B	C	D	E	F	G	H	I
A101836S	1	18	16	19.79	15.5	9.5	15.5	15.25	28.32	6	6
A101836L		36	14	36.89	33	7.5	33	11.69	19.69	6	8
A151836S	1.5	18	24	29.68	23	12	23	23.05	39.86	12	8
A151836L		36	24	55.34	40	14	50	21.29	31.33	12	10
A201836S	2	18	34	39.58	30	18.5	30	32.65	56.02	15	12
A201836L		36	28	73.79	60	14	66	24.58	38.17	15	12
A251836S	2.5	18	36	49.47	38.5	17.5	38.5	34.29	64.18	18	12
A251836L		36	32	92.24	75	17	64.52	27.87	45.01	18	15
A301836S	3	18	48	59.37	46	23	46	46.10	78.85	25	16
A301836L		36	39	110.63	70	18.5	100.17	35.57	54.25	25	20
A401836S	4	18	55	79.16	62	26	62	51.61	100.79	28	20
A401836L		36	47	147.58	95	22.5	134.16	37.28	68.14	28	20
A501836S	5	18	69	98.94	77	37.5	77	65.38	130.6	30	25
A501836L		36	56	184.47	100	25	165.47	44.47	84.44	30	25

Bánh răng Côn

Môđun : 1 - 5

Chất liệu : S45C

Tỉ lệ : 1/2

Số răng : 20.40

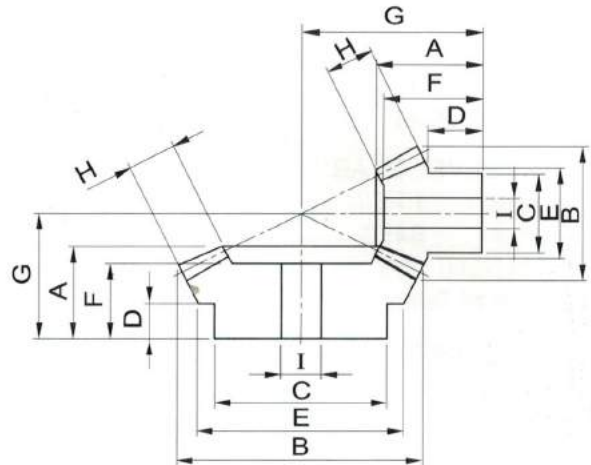
Name: BEVEL GEAR

Modulus : 1 - 5

Material : S45C

Speed Ratio : 1/2

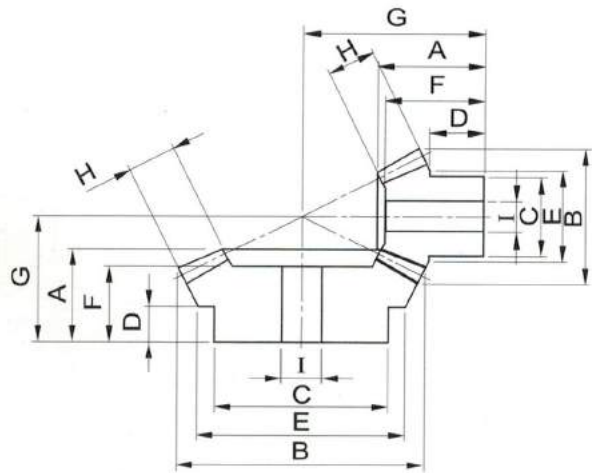
Number of Teeth : 20.40



Mã số sản phẩm (Manuf.no.)	Môđun (Modu.)	Số răng (Teeth)	A	B	C	D	E	F	G	H	I
A102040S	1	20	16	21.79	16	9.5	16	15.17	30.31	6	6
A102040L		40	16	40.89	35	9.5	37	13.63	22.66	6	8
A152040S	1.5	20	27	32.68	25	14.5	25	25.99	45.84	12	10
A152040L		40	25	61.34	40	14.5	55.64	22.88	33.77	12	10
A202040S	2	20	34	43.58	35	18.5	35	32.44	59.99	15	12
A202040L		40	30	81.79	62	15	73	24.64	42.10	15	15
A252040S	2.5	20	44	54.47	40	24	40	41.89	76.27	19	12
A252040L		40	33	102.24	75	17.5	94.52	27.89	48.03	19	15
A302040S	3	20	51	65.37	50	27	50	47.08	90.42	22	16
A302040L		40	42	122.68	80	19	110	35.26	60.36	22	20
A402040S	4	20	55	87.16	62	24	62	50.89	108.73	28	20
A402040L		40	46	163.58	95	21	150.16	36	71.02	28	20
A502040S	5	20	69	108.94	80	35.5	80	65.75	140.53	30	25
A502040L		40	55	204.47	100	26	187.7	44.95	88.31	30	25

Bánh răng Côn
 Môđun : 1 - 5
 Chất liệu : S45C
 Tỷ lệ : 1/3
 Số răng : 15.45

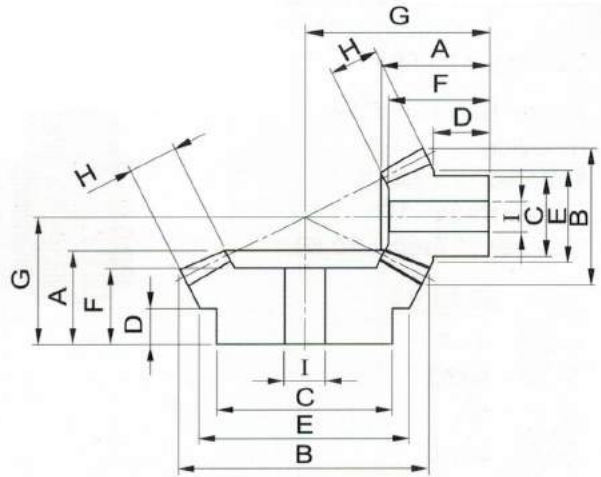
Name: BEVEL GEAR
 Modulus : 1 - 5
 Material : S45C
 Speed Ratio : 1/3
 Number of Teeth : 15.45



Mã số sản phẩm (Manuf.no.)	Môđun (Modu.)	Số răng (Teeth)	A	B	C	D	E	F	G	H	I
A101545S	1	15	14.5	16.90	12	8	12.50	12.44	29.57	6	6
A101545L		45	12.5	45.63	42	5.5	42	10.46	17.89	6	6
A151545S	1.5	15	23.5	25.35	18	13	18	22.70	47.42	10	8
A151545L		45	21	68.45	40	11.50	64	16.80	28.06	10	10
A201545S	2	15	30	33.79	24	14.50	24	28.96	60.34	15	10
A201545L		45	31	91.26	65	17.50	85	27.13	39.96	15	12
A251545S	2.5	15	40	42.24	30	19.50	30	38.79	76.75	20	12
A251545L		45	38	114.08	70	21.50	106.73	31.62	48.85	20	15
A301545S	3	15	45	50.69	35	21	35	43.14	90.03	23	15
A301545L		45	39	136.90	80	21.50	129.47	31.82	52.3	23	20
A401545S	4	15	54	67.59	49.5	23	49.5	51.74	114.67	30	16
A401545L		45	51	182.53	90	23	169.26	40.42	68.92	30	25
A501545S	5	15	67	84.49	60	30	60	63.86	145.18	35	20
A501545L		45	50	228.16	120	20	214.72	37.73	73.09	35	25

Bánh răng Côn
 Môđun : 1 - 5
 Chất liệu : S45C
 Tỷ lệ : 1/3
 Số răng : 20.60

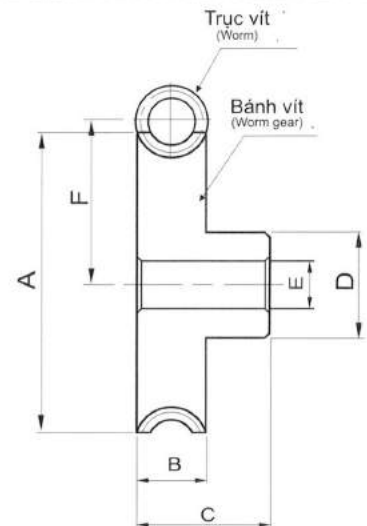
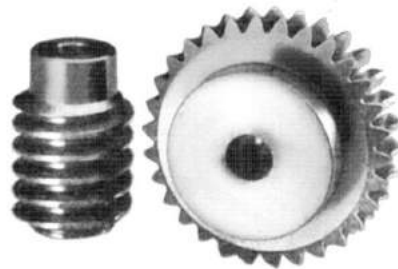
Name: BEVEL GEAR
 Modulus : 1 - 5
 Material : S45C
 Speed Ratio : 1/3
 Number of Teeth : 20.60



Mã số sản phẩm (Manuf.no.)	Môđun (Modu.)	Số răng (Teeth)	A	B	C	D	E	F	G	H	I
A102060S	1	20	21	21.90	15	14	15	20.36	45.05	6	6
A102060L		60	25	60.63	48	16.5	56	21.37	32.33	6	10
A152060S	1.5	20	27	32.85	25	14.5	25	26.04	60.26	12	8
A152060L		60	35	90.95	50	23.5	85.65	30.71	45.14	12	10
A202060S	2	20	35	43.79	34.5	19.5	34.5	33.76	80.29	15	10
A202060L		60	50	121.26	70	26	108	43.90	63.81	15	15
A252060S	2.5	20	45	54.74	43	24	43	43.51	100.44	20	16
A252060L		60	50	151.58	70	25	138.54	43.17	66.90	20	25
A302060S	3	20	50	95.69	50	26	50	47.59	117.46	23	15
A302060L		60	51	181.90	90	24	168.14	41.41	71.57	23	25
A402060S	4	20	70	87.59	68	38.5	68	67.67	160.57	30	20
A402060L		60	80	242.53	110	34.5	217.86	67.79	107.62	30	25
A502060S	5	20	75	109.49	80	37	80	71.60	190.56	35	25
A502060L		60	90	303.16	140	41	227.07	78.84	125.24	35	25

Bộ bánh vít trục vít
 Mô đun : 2 - 4
 Chất liệu : Bánh vít FC25
 Trục vít S45C
 Số răng : 20.60

Name: BEVEL GEAR
 Modulus : 1 - 5
 Material : S45C
 Speed Ratio : 1/3
 Number of Teeth : 20.60



Bánh vít mô đun M=2 (Phối hợp với trục vít đường kính 31.75mm, độ dài 55mm, 1 mỗi răng)

Mã số sản phẩm (Manuf.no.)	Số răng (Teeth)	Tỉ lệ (Speed Ratio)	A	B	C	D	E	中心距 F
D2020	20	1 : 20	46	20	35	35	10	33.875
D2030	30	1 : 30	66	20	35	54	12	43.875
D2040	40	1 : 40	86	20	35	65	12	53.875
D2050	50	1 : 50	106	20	35	70	12	63.875
D2060	60	1 : 60	126	20	35	70	12	73.875

Bánh vít mô đun M=2.5 (Phối hợp với trục vít đường kính 38.1mm, độ dài 65mm, 1 mỗi răng)

Mã số sản phẩm (Manuf.no.)	Số răng (Teeth)	Tỉ lệ (Speed Ratio)	A	B	C	D	E	中心距 F
D2520	20	1 : 20	57	24	40	43	10	41.55
D2530	30	1 : 30	82	24	40	50	10	54.05
D2540	40	1 : 40	107	24	45	60	15	66.55
D2550	50	1 : 50	132	24	45	60	15	79.05
D2560	60	1 : 60	157	24	45	70	15	91.55

Bánh vít mô đun M=3 (Phối hợp với trục vít đường kính 50.8mm, độ dài 75mm, 1 mỗi răng)

Mã số sản phẩm (Manuf.no.)	Số răng (Teeth)	Tỉ lệ (Speed Ratio)	A	B	C	D	E	中心距 F
D3020	20	1 : 20	68	28	46	50	10	52.4
D3030	30	1 : 30	98	28	46	58	15	67.4
D3040	40	1 : 40	128	28	46	70	15	82.4
D3050	50	1 : 50	158	28	46	70	18	97.4
D3060	60	1 : 60	188	28	46	80	18	112.4

Bánh vít mô đun M=4 (Phối hợp với trục vít đường kính 70mm, độ dài 75mm, 1 mỗi răng)

Mã số sản phẩm (Manuf.no.)	Số răng (Teeth)	Tỉ lệ (Speed Ratio)	A	B	C	D	E	中心距 F
D4020	20	1 : 20	91	32	50	62	10	71
D4030	30	1 : 30	132	32	50	70	15	91
D4040	40	1 : 40	171	32	50	78	18	111
D4050	50	1 : 50	212	32	50	85	18	131
D4060	60	1 : 60	251	32	50	92	18	151



Bánh răng công nghiệp

Công ty cổ phần Trường Phương Việt Nam

Hotline: 04.6661.6006

0903.220.698

Email: banhrangcongngghiep.com

truongphuongvn01@gmail.com

Địa chỉ văn phòng: số 26, ngõ 55, phố Đỗ Quang,
phường Trung Hòa, quận Cầu Giấy, Hà Nội